



**Providing Quality Products and Services  
Produced by Florida Citizens with  
Disabilities**

**July 1, 2005 – June 30, 2006**

**IN ACCORDANCE WITH ITN NO. 13-914-000-E,  
THE FLORIDA ASSOCIATION OF REHABILITATION FACILITIES, INC.  
RESPECT OF FLORIDA  
SUBMITS THE  
CENTRAL NONPROFIT AGENCY FY 2005-2006 ANNUAL REPORT  
TO THE  
FLORIDA DEPARTMENT OF MANAGEMENT SERVICES**

**RESPECT of Florida  
(An entity of Florida ARF)**



## TABLE OF CONTENTS

### **1. OVERVIEW**

- Introduction
- RESPECT Employees
- RESPECT/DMS Responsibilities
- RESPECT Awards
- Letters of Support
- Sales History

### **2. SURVEY RESULTS**

- Employee/ Client Survey
- Employment Center Survey

### **3. PRODUCTS SALES REPORT**

- Employment Center
- Product Category
- Customer

### **4. SERVICES SALES REPORT**

- Summary
- New Contracts
- Renewals
- Miscellaneous Activity
- Contract by Service Providers

### **5. CERTIFIED EMPLOYMENT CENTERS**



## INTRODUCTION

RESPECT of Florida is a preferential purchasing program established by the Florida Legislature in 1974 through Chapters 413.032-413.037, Florida Statutes. The purpose of RESPECT is to encourage and assist individuals with severe disabilities to achieve maximum personal independence through useful, productive, and gainful employment by assuring an expanded and constant market for their products and services.

The statute directs state agencies to purchase certain products and services from participating qualified nonprofit agencies throughout Florida employing individuals who have severe disabilities. The idea is simple: state and local government agencies purchase products and services they already need from Florida-based nonprofit community organizations employing persons with disabilities. Under RESPECT, persons with disabilities, governmental agencies, and Florida citizens all win. Here is how:

- Meaningful employment is created for individuals with severe disabilities whose opportunities are otherwise limited;
- Government receives quality products and services at a fair market price determined by the Department of Management Services; and
- Florida and its populace benefit by having fewer citizens dependent upon welfare and other tax-supported subsidies, and the state experiences economic growth as a result.

The purchase of these products or services is made available by RESPECT of Florida, the designated Central Nonprofit Agency and an entity of the Florida Association of Rehabilitation Facilities, Inc.

RESPECT is an example of privatized government operating at its best, requiring no direct state funding for operation. Jobs include packaging, janitorial and grounds maintenance, coin collection, electronic assembly, and various office employment opportunities. RESPECT of Florida has affirmed that citizens with disabilities are capable of competing in any industry if given the opportunity.

2005-2006 was a period of change. New leadership and an emphasis on relationship management generated renewed interest in the program. By the end of the period, positive results were being realized. With help from the Department of Management Services, processes were implemented that greatly reduced the turn-around time for agency certification, product





approval and product price change requests. This had a positive impact on certified employment centers.

RESPECT sales for the 2005-2006 year reached a record high. RESPECT product sales totaled \$4,355,243.19 and service contracts generated \$19,148,602.44 in sales, which enabled 1645 persons with disabilities to be employed through the RESPECT program. During this period there were 45 DMS certified nonprofit agencies located throughout the State of Florida.

The RESPECT Oversight Committee, a cross-section of employment center representatives that oversees operations and discusses important state use issues and developments, continues to meet on a quarterly basis. We foresee the RESPECT Oversight Committee remaining actively involved in exploring new employment opportunities for Florida Citizens with Disabilities. Four targeted surveys were conducted to solicit feedback from our customers, employment centers and most importantly the individuals we serve. Results of the surveys were overwhelmingly positive and are included for review.

Below are the "standards and indicators," as stated in the contract, that the service provider shall achieve in order to increase employment in integrated settings of those individuals who are blind or have other severe disabilities:

- 1) Place 5% of individuals with disabilities into competitive and supported employment annually (17% were placed);
- 2) Maintain placement of at least 25% of individuals with disabilities in supported employment annually (35% placement was maintained);
- 3) Increase the number of employment centers by one annually (decreased by 2);
- 4) Increase the number of individuals being served by 5% annually (decreased by 1%); and
- 5) Increase the hourly wage by 3% annually (increased by .6%).

Listed below are the "performance measures" as stated in the contract that will be evaluated annually:

- 1) Increase gross revenue by 5% annually (increased by 5%);
- 2) Achieve a minimum score of 90% on customer satisfaction survey (achieved a score of 95%);
- 3) Achieve a minimum score of 90% on employee satisfaction survey (achieved a score of 92%);
- 4) Achieve a minimum score of 90% on employment center satisfaction survey (achieved a score of 97%);
- 5) Achieve a minimum score of 90% on satisfaction survey conducted by DMS annually; and





- 6) Increase the number of employment center employees receiving benefits by 3% annually (decreased by 2%).

There was also a significant increase in registrants for Club 413, a loyalty-based program that shares RESPECT highlights and information with its members on a regular basis. This site now “touches” nearly 4,149 VIP users and has become an integral part of the marketing of products and services for RESPECT of Florida.

We are committed to working closely with the Department of Management Services to improve RESPECT of Florida. We will continue to pursue all avenues that lead to increased job opportunities for Florida citizens with disabilities.





## The RESPECT of Florida Team

### **SERVICE CONTRACTING**

Bob Scripter, Service Contracts Director  
Aubrey Goff, Northeast Project Manager  
John Maslar, Northwest Project Manager  
Nancy Dovale, South Florida Project Manager  
Nancy Perlman, Service Contracts Administrator

### **PRODUCT MARKETING — CUSTOMER SERVICE**

Randy Borges, Products Manager  
Faith Mears, Customer Service Coordinator  
Erin Albertson, IT Administrator

### **PROGRAM SUPPORT**

Terry Farmer, President/CEO  
Scott Gaedtke, Director  
Melissa McHargue, Administrative Assistant  
Patty Allen, Accounting Supervisor  
John Bruntlett, Human and Physical Resources Director  
Michelle Stephens, Senior Accountant  
Dominic Cromartie, Senior Accountant





## RESPECT OF FLORIDA RESPONSIBILITIES

- Represent participating nonprofit agencies to DMS
- Represent participating nonprofit agencies to government agencies
- Recommend products and services to DMS
- Negotiate contracts with government agencies
- Process purchase orders from government agencies
- Invoice government agencies for products and services provided
- Administration and reporting
- Provide technical assistance and training to participating nonprofit agencies
- Maintain nonprofit agencies' annual DMS certification
- Develop marketing packages of products and services for government agencies
- Monitor quality of products and services
- Conduct annual satisfaction surveys (employee, nonprofit agency, customer)
- Maintain RESPECT of Florida Web site
- Maintain all standards, indicators, and measures as required in the contract between DMS and RESPECT of Florida





## DEPARTMENT OF MANAGEMENT SERVICES RESPONSIBILITIES

- Support RESPECT of Florida
- Designate a DMS liaison for RESPECT of Florida
- Designate products and services to be procured by government agencies
- Participate in service provider coordination
- Determine fair market prices for designated products and services
- Assist the service provider in making program improvements
- Monitor the procurement list for duplications
- Assign products and service contracts to qualified nonprofit agencies
- Certify nonprofit agencies as qualified to participate in the program
- Assist the service provider with awards and recognition at state venues
- Establish rules and procedures necessary to operate the program







**2005 AWARDS: RESPECT OF FLORIDA EMPLOYEES OF THE YEAR**

**Products Division**

**Johnny Abbot**  
*CARC- Advocates for Citizen with Disabilities, Inc.*

Johnny Abbott was selected as RESPECT of Florida's Employee of the Year, Products Division. Johnny has worked at CARC for 18 months producing office products such as staplers and hole punches. He is a reliable, dependable employee with an excellent work ethic and is always eager to assist staff and his peers. Johnny volunteers his landscaping services at a local group home.

**Services Division**

**Thomas Coon**  
*ARC Nassau County, Inc.*

Thomas Coon was awarded RESPECT of Florida's Employee of the Year, Services Division. Thomas has worked at ARC Nassau for one year and has become an integral part of the Florida Welcome Center with his ability to do multiple jobs and train new employees. He has an outstanding attendance record. Thomas is a YMCA member, volunteers with Keep Nassau Beautiful, and participates in the Special Olympics.

**Most Improved Employee of the Year**

**Armando Trevino**  
*Hope Center*

Armando Trevino, of Hope Center, Inc., received the award for the Most Improved Employee of the Year. Armando has been with Hope Center for six months and works on the custodial crew at a Florida Highway Patrol office. He is hard working, caring, and friendly.

**Rookie of the Year**

**Richard Horton**  
*MacDonald Training Center*

Richard Horton, of MacDonald Training Center, Inc., was chosen as the Rookie Employee of the Year. He has been working for MacDonald Training Center doing micrographics for eight months. Richard demonstrates attention to detail and has an excellent "can-do" attitude.





## 2005 AWARDS

### OUTSTANDING EMPLOYEES OF THE YEAR

**Peter Johnson**  
*ACT Corporation*

**Gregory Faulk**  
*ARC Gateway*

**Eddie Moultry**  
*ARC Washington-Holmes*

**Paul J. Boyden, Jr.**  
*Axon Technologies*

**Gerald Maude Scott**  
*MacDonald Training Center*

**Easlyn Wells**  
*Pine Castle*

**Vernon Early**  
*Quest, Inc.*

**Steve Groesbeck**  
*The Arc Nature Coast*

**Thomas Pullins**  
*Seagull Industries*

**Employment Center of the Year – Products**  
**MacDonald Training Center**

**Employment Center of the Year – Services**  
**Goodwill South Florida**

### RESPECT OF FLORIDA CUSTOMERS OF THE YEAR

**PRODUCTS**  
Department of Health

**SERVICES**  
Seminole County Parks &  
Recreation

### INDIVIDUAL CUSTOMER RECOGNITION

**Allison Herring**  
*Department of Health*

**Cathy Harvey**  
*DOC- Region II Purchasing*

**Diane Livingston**  
*Desoto Juvenile Detention Center*

**Douglas Zimmer**  
*Hillsborough County- Plant City Health  
Department*

**Freda Kelly**  
*Department of Revenue*





**JEB BUSH**  
**GOVERNOR OF THE STATE OF FLORIDA**

June 13, 2003

Dear Friends:

The state of Florida can be proud of the accomplishments of RESPECT of Florida. For nearly 29 years, RESPECT of Florida, in partnership with Florida's state and local government agencies, has provided meaningful employment opportunities to Florida residents with disabilities.

I encourage all state agencies and political subdivisions to fully comply with the statutory responsibility of purchasing from RESPECT of Florida. Cooperation is critical for the program to continue to successfully expand employment for Florida residents with disabilities.

State and local government agencies who participate in the RESPECT program receive high quality products and services which have been independently reviewed and evaluated for performance and price requirements. Florida residents with disabilities are employed in the production of these products and services, thereby reducing their dependence on government support.

RESPECT of Florida and the participating community-based organizations are working to ensure every individual with a disability in the sunshine state is provided an opportunity to enjoy economic independence.

Sincerely,

  
Jeb Bush





*The Administrative and Operations Arm  
of Florida's Government*



DEPARTMENT OF MANAGEMENT  
**SERVICES**

JEB BUSH, GOVERNOR

WILLIAM S. SIMON, SECRETARY

December 14, 2004

Dear Procurement Employee:

I am pleased to announce the Department of Management Services and Florida Association of Rehabilitation Facilities/RESPECT of Florida recently entered into a three-year agreement continuing RESPECT of Florida's role as the State of Florida's nonprofit partner. This continues a nearly 30-year partnership and has created meaningful employment opportunities for Florida residents with severe disabilities by providing products and services to state and local government agencies.

RESPECT of Florida and the participating community-based agencies work to ensure that disabled citizens are provided with an opportunity to enjoy economic independence. The products and services offered span technologies and industries, providing a wide array of training opportunities for Floridians with disabilities. RESPECT's purpose is to ensure a constant market for these products and services to state and local government agencies.

When you purchase a RESPECT product or service, you are helping to employ Florida citizens with disabilities, reducing their dependence on welfare and the need for costly institutionalization.

I urge all state agencies to support RESPECT of Florida and to fully comply with Florida Statute, Chapter 413, by making purchases through RESPECT. Your cooperation is critical for RESPECT of Florida to continue its success in expanding employment for Floridians with disabilities.

I commend you for your efforts in supporting RESPECT of Florida and encourage you to continue to do so in the future.

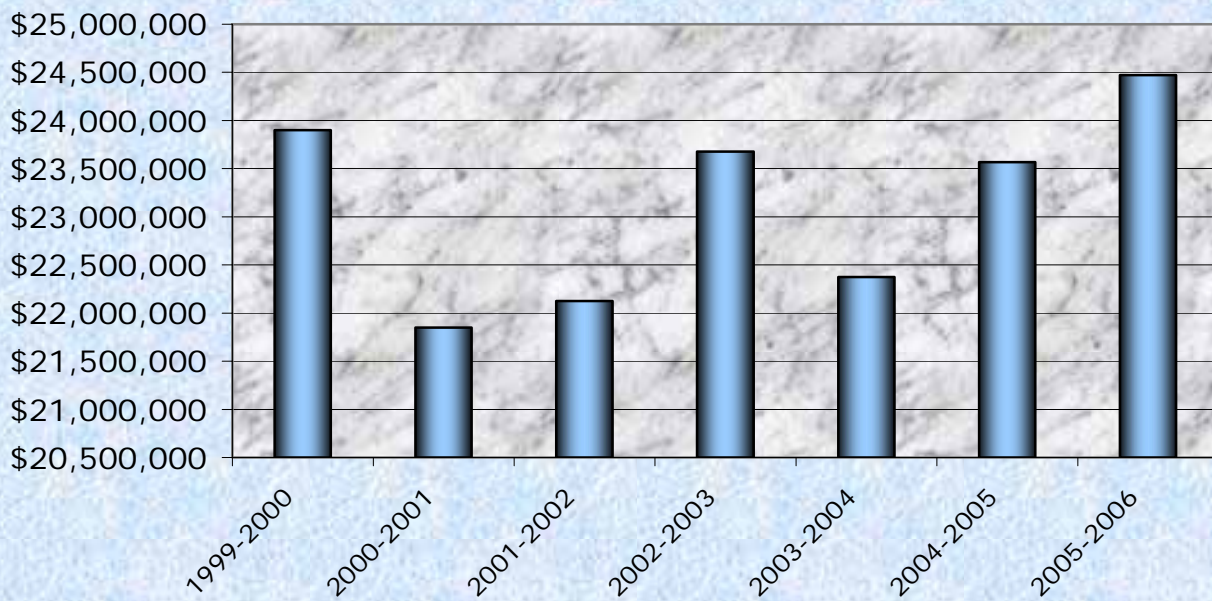
Sincerely,

William S. Simon

Secretary, Department of Management Services



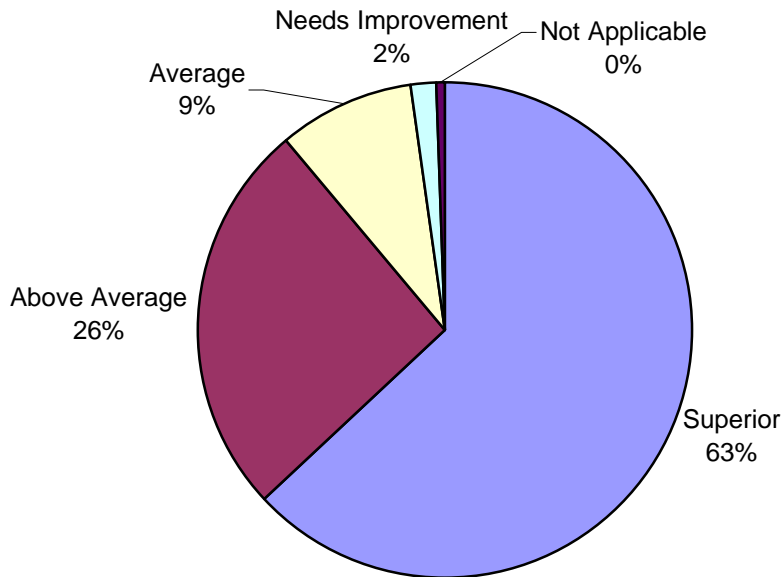
### Sales History 1999 - 2006



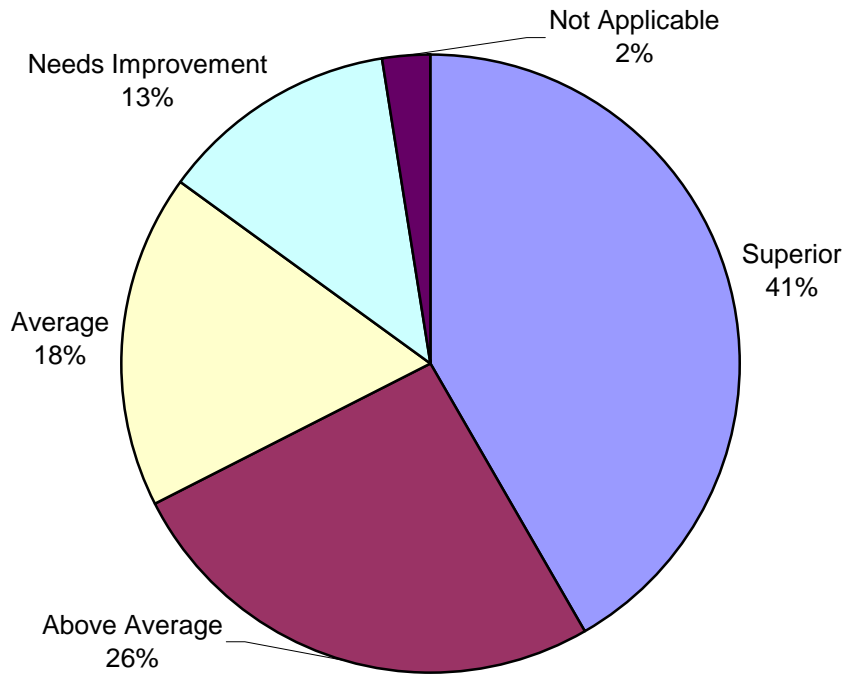
Client Satisfaction Survey  
July 1, 2005 – June 30, 2006

		5 Superior	4 Above average	3 Average	2 Needs improvement	1 N/A
1)	I like what I do in my job.	587	241	82	18	4
2)	I am happy with my salary and benefits.	390	242	165	118	23
3)	I like where I work.	453	260	82	22	6
4)	I get the help I need when I ask for it.	592	242	72	25	5
5)	I want to keep my job for another year.	575	228	68	18	14
	<b>TOTAL</b>	<b>2597</b>	<b>1213</b>	<b>469</b>	<b>201</b>	<b>52</b>

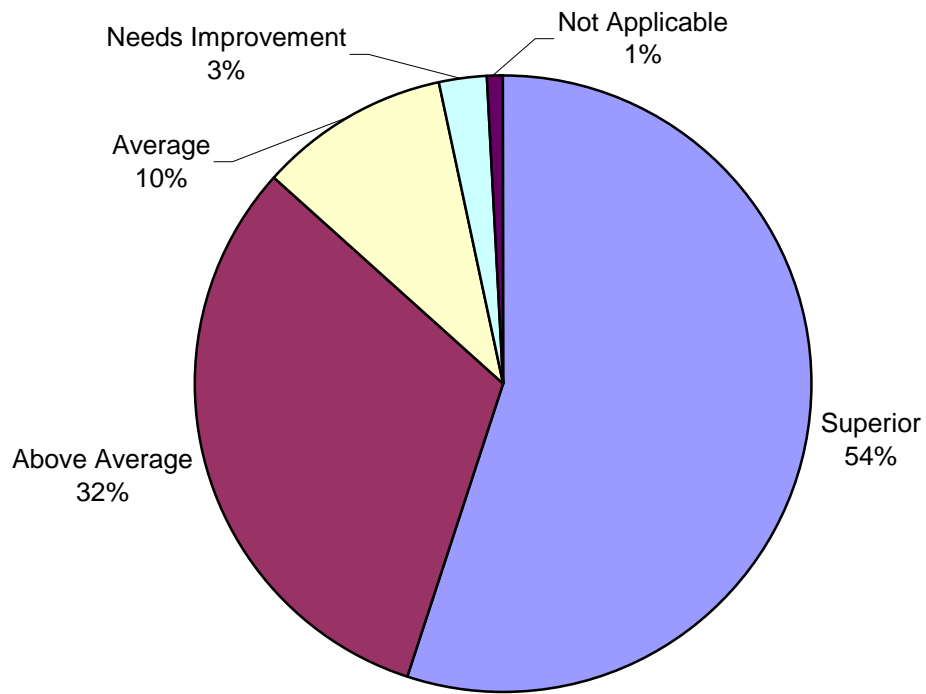
**1. I like what I do at my job.**



**2. I am happy with my salary and benefits.**

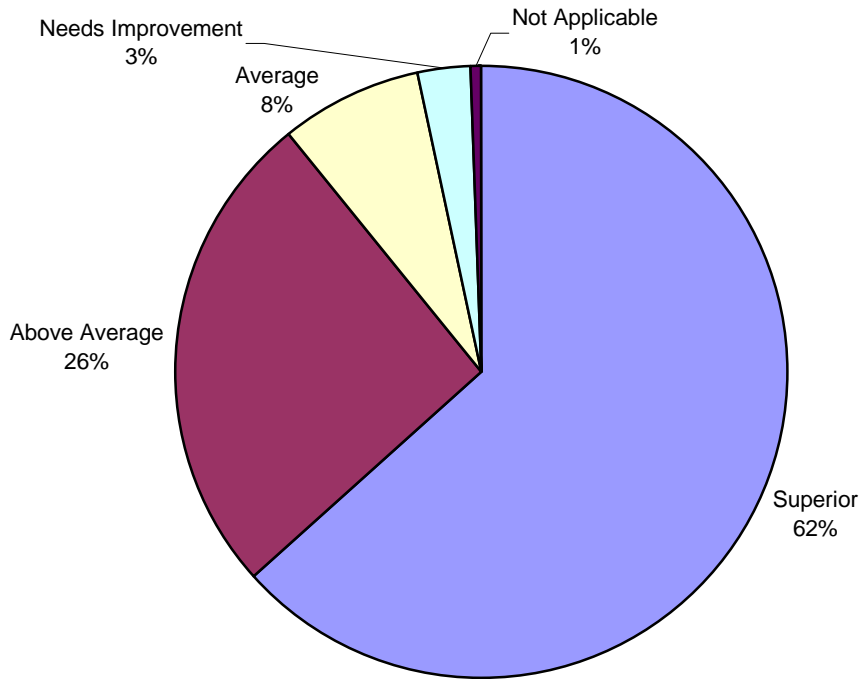


**3. I like where I work.**

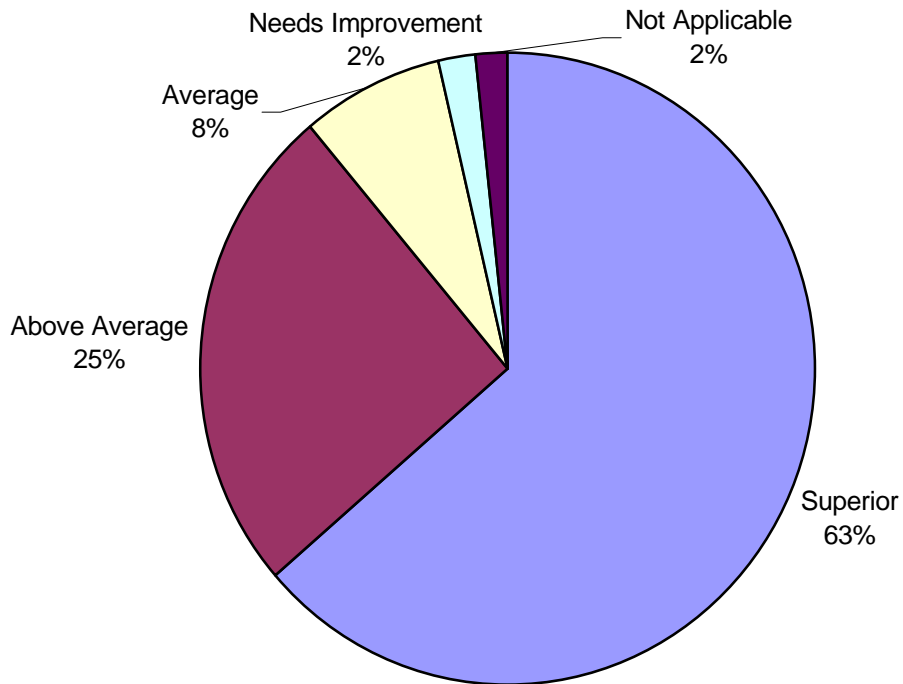


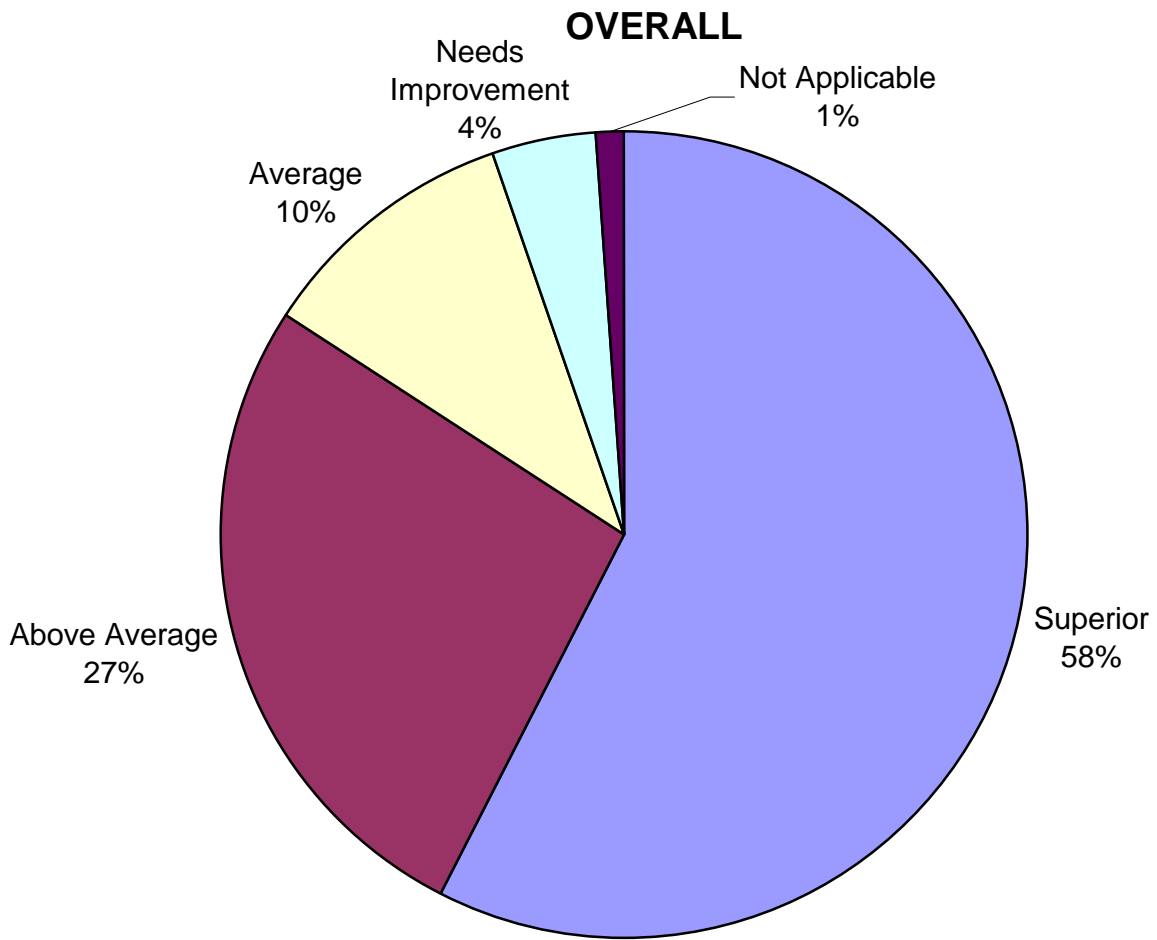


**4. I get the help I need when I ask for it.**



**5. I want to keep my job for another year.**



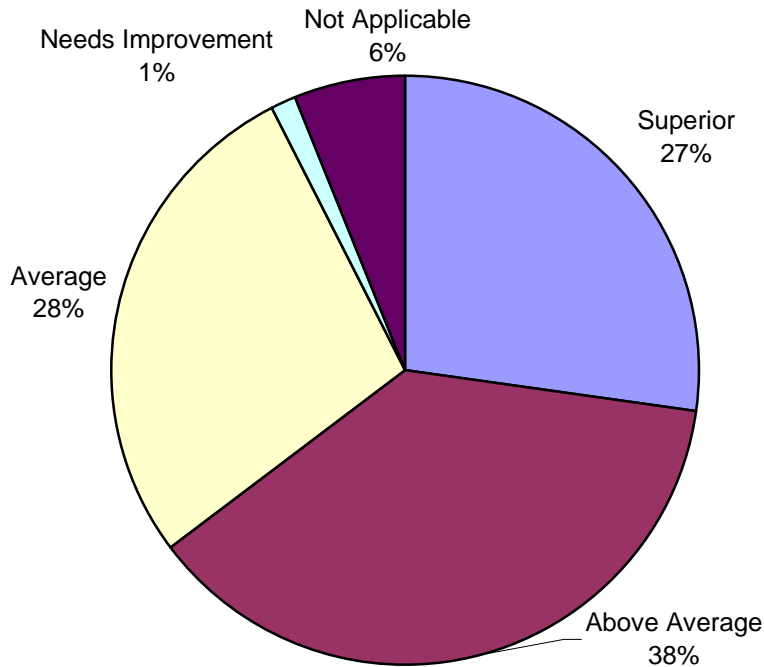




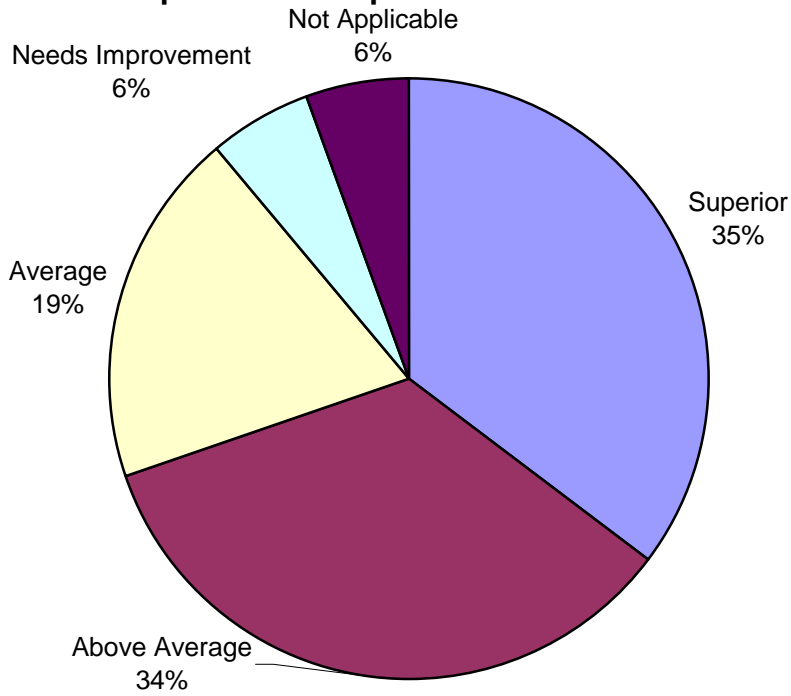
Employment Center Satisfaction Survey  
November 30, 2004

	5 Superior	4 Above average	3 Average	2 Needs improvement	1 N/A
1) ROF's operational procedures are clear. (product development, certification, invoicing procedure, etc.)	39	54	40	2	9
2) ROF staff provided complete and accurate information to you.	51	50	28	8	8
3) ROF staff was courteous and helpful.	82	45	11	1	7
4) When help was requested, ROF staff provided a response in a reasonable amount of time.	55	51	26	6	8
5) The ROF web site is easy to navigate.	34	56	29	0	25
6) My overall experience with ROF was positive.	45	66	24	1	7
<b>TOTAL</b>	<b>306</b>	<b>322</b>	<b>158</b>	<b>18</b>	<b>64</b>

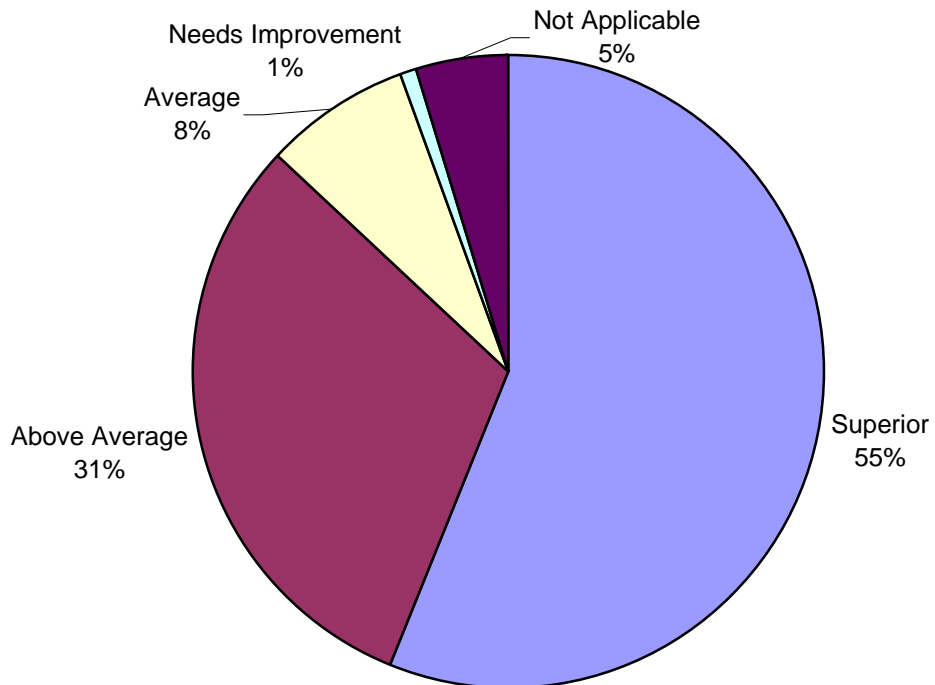
**1. ROF's operational procedures are clear.  
(product development, certification, invoicing procedures, etc.)**



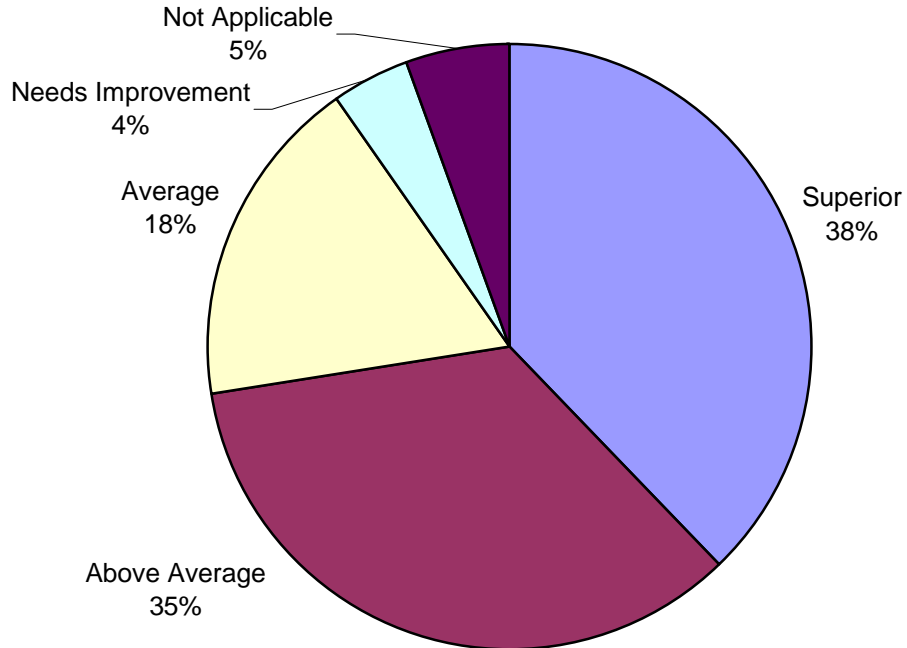
**2. ROF staff provided complete and accurate information.**



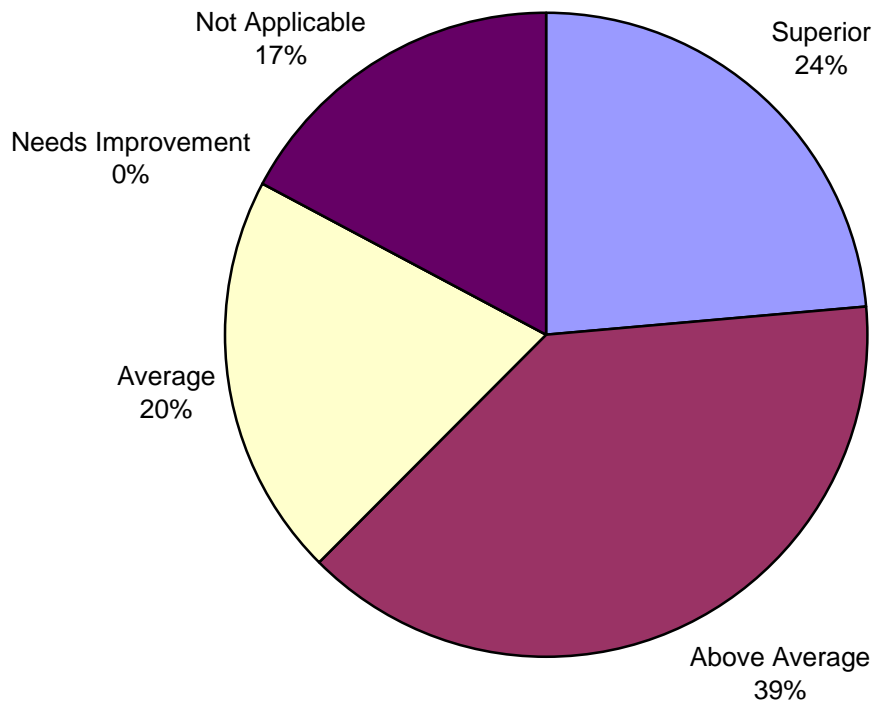
**3. ROF staff was courteous and helpful.**



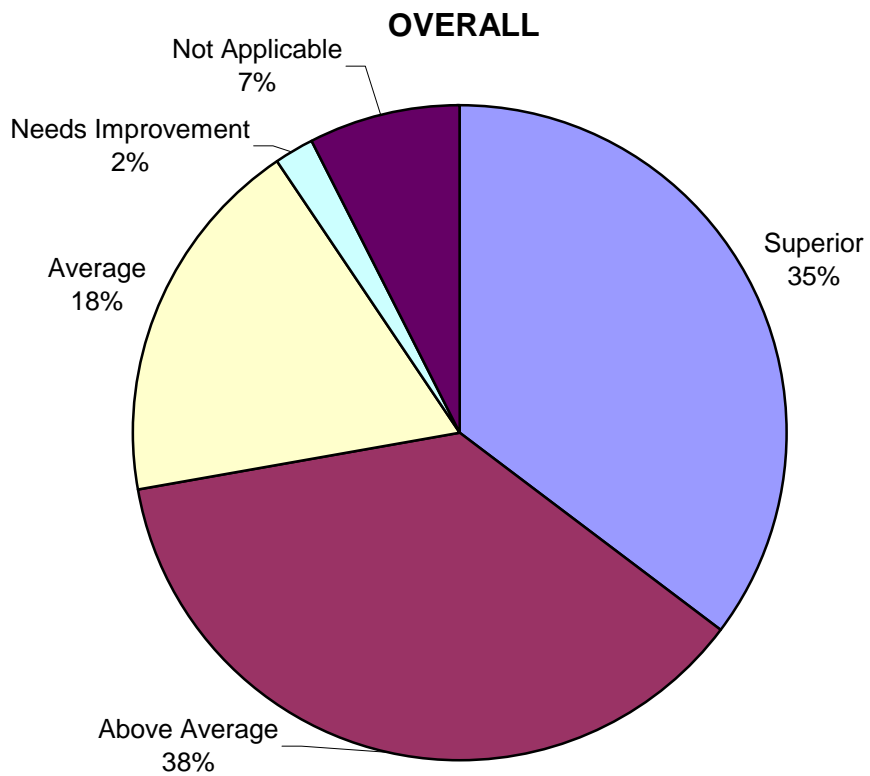
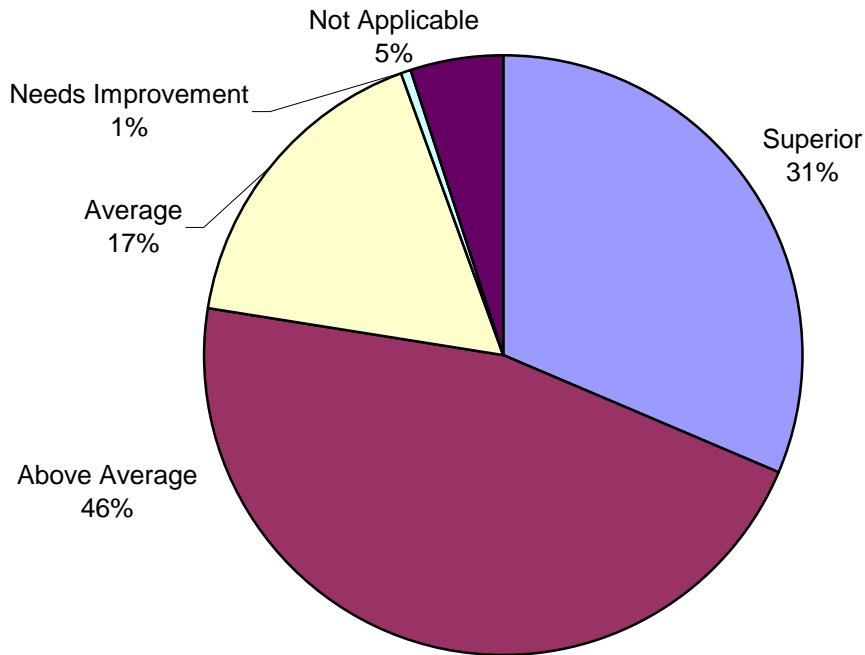
**4. When help was requested, ROF staff provided a response in a reasonable amount of time.**



**5. The ROF website is easy to navigate.**



**6. My overall experience with ROF was positive.**





## RESPECT OF FLORIDA SALES BY EMPLOYMENT CENTERS July 05 - June 06

Name	Products Sales	Service Sales
ACT Corporation, <i>Daytona Beach</i>	\$ 68,384.32	\$ 1,585,258.94
ARC of Alachuha, <i>Gainesville</i>	-	\$ 17,919.55
ARC Brevard, <i>Rockledge</i>	-	\$ 83,425.14
ARC Gateway, <i>Pensacola</i>	-	\$ 529,513.91
ARC Jacksonville, <i>Jacksonville</i>	-	\$ 43,700.34
ARC Nassau County, <i>Yulee</i>	-	\$ 474,271.74
ARC Nature Coast, <i>Brooksville</i>	-	\$ 201,355.01
Guld County ARC, <i>Port St. Joe</i>	-	\$ 54,101.09
Archways, <i>Ft. Lauderdale</i>	\$ 6,351.48	\$ 10,746.12
Axon Technologies, <i>Port Richey</i>	\$ 1,181,897.19	\$ 218,083.67
Brevard Achievement Ctr., <i>Rockledge</i>	\$ 1,953,296.71	-
CARC, <i>Lake City</i>	\$ 37,100.28	\$ 1,139,236.65
CCAR Services, <i>Green Cove Springs</i>	\$ 4,371.30	-
Comprehensive Community Svs., <i>Live Oak</i>	-	\$ 844,838.94
East Coast Contract Industries., <i>Titusville</i>	\$ 1,248.00	\$ 758,890.28
Gadsden ARC, <i>Quincy</i>	\$ 20,458.93	\$ 910,708.98
Glades ARC, <i>Belle Glade</i>	-	\$ 33,932.88
Goodwill Industries-Broward, <i>Ft. Lauderdale</i>	-	\$ 50,229.19
Goodwill Industries-South FL., <i>Miami</i>	\$ 111,595.93	\$ 6,375,085.00
Hope Center, <i>Miami</i>	-	\$ 12,270.48





Horizons of Okaloosa County, <i>Ft. Walton Beach</i>	-	\$	87,066.30
Jackson ARC, <i>Marianna</i>	-	\$	334,360.42
James Ranch/Div. of MacDonald Training Ctr., <i>Tampa</i>	\$ 32,863.34		-
Jeff Industires, <i>Hypoluxo</i>	\$ 552.48		-
Lakeview Center, <i>Pensacola</i>	\$ 83,927.93	\$	1,402,421.83
MacDonald Training Center, <i>Tampa</i>	\$ 128,578.64	\$	13,686.37
MacTown, Inc., <i>Miami</i>	\$ 286,912.44	\$	26,661.44
Madison/Jefferson ARC, <i>Madison</i>	-	\$	1,048,451.58
Palm Beach Habilitation Ctr., <i>West Palm Beach</i>	\$ 608.16	\$	141,120.33
Pine Castle, <i>Jacksonville</i>	\$ 323,135.91		-
Polk County AHC, <i>Lakeland</i>	-	\$	458,436.60
Quest, <i>Orlando</i>	-	\$	295,854.67
The ARC of Santa Rosa County, <i>Milton</i>	-	\$	1,028,732.17
Seagull Industries f/t Disabled, <i>Riveria Beach</i>	\$ 6,920.00	\$	223,033.63
St. Andrew Bay Center, <i>Lynn Haven</i>	-	\$	54,315.46
Walton County ARC, <i>Defuniak Springs</i>	-	\$	86,889.57
Washington/Holmes ARC, <i>Chipley</i>	\$ 25,272.02	\$	1,323,354.44
UCP of East Central Fl (WORC), <i>Daytona Beach</i>	\$ 74,267.63		-
ICA Sub-Contractors	-	\$	39,540.00
<b>TOTAL:</b>	<b>\$ 4,355,243.19</b>	<b>\$</b>	<b>19,148,602.44</b>







## SALES BY CATEGORIES

JULY 05 - JUNE 06

### COMPUTERS

Personal Computer & Up-Grades	\$	281,537.28
Web Page Design	\$	<u>4,371.30</u>
	\$	<b>285,908.58</b>

### FIRST AID AND SAFETY

Back Support Belts	\$	2,928.64
Ballistic Vest	\$	608.16
Biohazard Kits/ Refills	\$	6,497.21
CPR Kits/ Refills	\$	4,701.55
Ear Plugs	\$	3,191.36
Elastic Bandages	\$	2,548.12
Eyewash Solution/ Holders	\$	634.75
First Aid Kits/ Refills	\$	62,898.10
Latex Gloves & Dispensers	\$	1,036,943.46
Prophylactics (all types)	\$	774,625.00
Safety Glasses & Goggles	\$	11,032.82
Safety Vest	\$	39,738.94
Sunscreen Lotion	\$	374.66
Wheelchairs & Parts	\$	<u>88,927.93</u>
	\$	<b>2,035,651.30</b>

### JANITORIAL AND KITCHEN

Wiping Rags	\$	12,623.30
Dust Mops	\$	3,496.05
Mop Products	\$	325,558.63
Soap & Dispensers	\$	52,554.09
Scrubbers	\$	12,648.72
Squeegees	\$	<u>619.01</u>
	\$	<b>407,499.80</b>

### MUNICIPAL

Admission Kits	\$	3,124.10
Bike Racks	\$	552.48
Condiments Kits	\$	286,912.44
Drug Testing Kits	\$	6,920.00
Flags(State,USA & POW)	\$	111,595.93
Jumper Cables	\$	6,200.46





Survey Stakes	\$	11,878.30
Underpads/ Washcloths (disposable)	\$	<u>23,181.20</u>
	\$	<b>450,364.91</b>

### OFFICE

Bulletin Boards	\$	13,429.48
Calculators	\$	1,681.18
Calendars (all types)	\$	115,213.18
Chair Mats	\$	40,395.68
Clipboards & Archfiles	\$	3,816.69
Clocks	\$	19,654.51
Correction Fluid - <i>discontinued</i>	\$	266.64
Ergonomic Accessories	\$	1,331.02
Laser & Ink-Jet Cartridges	\$	291,951.74
Mailing Tubes	\$	326.13
Paper Clips & Push Pins	\$	1,248.00
Pencils, Pens & Makers	\$	137,149.14
Price Per Page Services	\$	232,484.61
Staplers & Accessories	\$	37,100.28
Toner Services	\$	233,769.07
White Marker Boards & Accessories	\$	<u>10,955.48</u>
	\$	<b>1,140,772.83</b>

### PROMOTIONAL

Award Plaques	\$	20,458.93
Clothing-Silk Screened/Embroidery	\$	6,351.48
Documents Frames-Wood & Metal	\$	<u>8,235.36</u>
	\$	<b>35,045.77</b>

**Grand Total** \$ **4,355,243.19**





**SALES BY CUSTOMERS**  
**JULY 05 - JUNE 06**

**CITIES**

<b>NAME</b>	<b>PRODUCTS</b>	<b>SERVICES</b>
Alachua	\$ 113.58	\$ -
Altamonte Springs	\$ -	\$ 1,566.89
Boynton Beach	\$ 1,044.34	\$ 15,429.12
FT. Walton Beach	\$ 613.14	\$ -
Homestead	\$ 330.00	\$ -
Leesburg	\$ 199.80	\$ -
Live Oak	\$ 387.40	\$ -
Palm Bay	\$ 169.20	\$ -
Pembroke Pines	\$ 2,399.75	\$ -
Pensacola	\$ 475.08	\$ 584,899.98
St. Petersburg	\$ 291.25	\$ -
Tallahassee	\$ -	\$ 187,924.92
West Melbourne	\$ 81.45	\$ -
West Palm Beach	\$ -	\$ 94,063.92
Wildwood	\$ 137.92	\$ -
Winter Park	\$ -	\$ 31,048.93
	<b>\$ 6,242.91</b>	<b>\$ 883,884.83</b>

**COUNTIES**

<b>NAME</b>	<b>PRODUCTS</b>	<b>SERVICES</b>
Bay	\$ 1,348.80	\$ -
Brevard	\$ -	\$ 26,017.26
Broward	\$ 43,536.95	\$ -
Escambia	\$ 709.40	\$ -
Highlands	\$ 1,034.50	\$ -
Hillsborough	\$ 242,396.10	\$ 5,263.55
Lee	\$ 5714.44	\$ -
Martin	\$ 195.57	\$ -
Miami/Dade	\$ 6,682.70	\$ 5,141,866.85
Orange	\$ 135,470.00	\$ 225,758.75
Palm Beach	\$ 23,136.68	\$ 229,750.04
Pasco	7,724.87	-
Pinellas	\$ 4059.56	\$ -
Seminole	\$ -	\$ 39,220.99





NAME	PRODUCTS	SERVICES
Volusia	\$ 344.62	\$ -
	<b>\$ 472,354.19</b>	<b>\$ 5,667,877.44</b>

### COMMUNITY COLLEGES

NAME	PRODUCTS	SERVICES
Daytona Beach	\$ 172.84	-
Gulf Coast	\$ 982.90	\$ -
Santa Fe	\$ 584.96	\$ -
Valencia	\$ -	\$ 6,855.93
	<b>\$ 1,740.70</b>	<b>\$ 6,855.93</b>

### SCHOOL BOARDS

NAME	PRODUCTS	SERVICES
Bay	\$ 191.00	\$ -
Broward	\$ 26,746.96	\$ -
Columbia	\$ 4,624.25	\$ -
Duval	\$ 6,662.40	\$ -
Gadsden	\$ 1,269.45	\$ -
Hendry	\$ 93.12	\$ -
Lake	\$ 4,708.31	\$ -
Lee	\$ 125.44	\$ -
Martin	\$ 1,324.93	\$ -
Miami/Dade	\$ 150,231.90	\$ -
Orange	\$ 303.60	\$ -
Osceola	\$ 71,646.20	\$ -
Pasco	\$ 121,332.75	\$ -
Palm Beach	\$ 1,549.11	\$ -
Seminole	\$ 92,886.93	\$ -
	<b>\$ 483,696.35</b>	<b>\$ -</b>

### TOWNS

NAME	PRODUCTS	SERVICES
Havana	\$ 153.28	\$ -
	<b>\$ 153.28</b>	<b>\$ -</b>

### STATE AGENCIES

NAME	PRODUCTS	SERVICES
Agency for Health Care	\$ 2,983.43	\$ -





<b>NAME</b>	<b>PRODUCTS</b>	<b>SERVICES</b>
Agriculture & Consumer Svs	\$ 10,608.25	\$ 11,370.48
Business & Professional Regulation	\$ 33,711.39	\$ -
Children & Families	\$ 195,514.34	\$ -
Citrus	\$ 84.64	\$ -
Community Affairs	\$ 1,450.75	\$ -
Corrections	\$ 1,282,588.48	\$ -
Education	\$ 6,747.38	\$ -
Elder Affairs	\$ (325.27)	\$ -
Environmental Protection	\$ 29,636.04	\$ 126,866.83
Financial Services	\$ 12,877.20	\$ -
Fish & Wildlife Conservation Commission	\$ 5,661.07	\$ 19,557.22
Guardian ad Litem	\$ 4,147.65	\$ -
Governor's Office	\$ 1,470.60	\$ -
Health	\$ 993,127.82	\$ 817,039.26
Highway Safety & Motor Vehicles	\$ 39,323.05	\$ 36,227.20
Judicial	\$ 1,135.04	\$ 18,173.98
Juvenile Justice	\$ 308,760.11	\$ 154,830.00
Law Enforcement	\$ 12,884.59	\$ -
Lottery	\$ 740.16	\$ -
Management Services	\$ 13,175.70	\$ 218,083.67
Military Affairs	\$ 17,321.02	\$ -
Public Defenders Office	\$ 5,187.58	\$ -
Public Service Commission	\$ 453.54	\$ -
Revenue	\$ 85,592.21	\$ -
State's Attorney Office	\$ 5,884.37	\$ -
Department of State	\$ 15,012.13	\$ -
Transportation	\$ 136,880.49	\$ 3,065,491.74
Veteran's Affairs	\$ 5,650.46	\$ -
Agency for Workforce Innovation	\$ 1,109.58	\$ -
	<b>\$ 3,229,393.80</b>	<b>\$ 4,467,640.38</b>

### UNIVERSITIES

<b>NAME</b>	<b>PRODUCTS</b>	<b>SERVICES</b>
Florida International	\$ -	\$ 200,154.99
	<b>\$</b>	<b>\$ 200,154.99</b>

### OTHERS

<b>NAME</b>	<b>PRODUCTS</b>	<b>SERVICES</b>
Assurant Group	\$ 539.49	\$ -





<b>NAME</b>	<b>PRODUCTS</b>	<b>SERVICES</b>
Child Care Resources	\$ 234.52	\$ -
FL League of Cities	\$ 5,107.06	\$ -
Jackson Memorial Hospital	\$ 27,921.88	\$ -
Jorgensen Contracts	\$ 532.11	\$ -
Morrison Food Mgmt	\$ 122,524.84	\$ -
PPB Environmental SUVs	\$ 1,132.51	\$ -
Sheridan Tech Center	\$ 645.60	\$ -
Southwest FL Water Mgmt.	\$ -	\$ 201,355.01
St. John River Water Mgmt.	\$ -	\$ 283,058.08
Workforce Tampa	\$ 2,994.70	\$ -
Cornerstone Software	\$ 29.25	\$ -
	<b>\$ 161,661.96</b>	<b>\$ 484,413.09</b>

**ASSET MANAGEMENT CONTRACTS**

<b>NAME</b>	<b>PRODUCTS</b>	<b>SERVICES</b>
ICA (DOT)	\$ -	\$ 6,560,368.53
Penske Trucking Leasing	\$ -	\$ 114,886.96
VMS (DOT)	\$ -	\$ 762,540.29
	<b>\$ -</b>	<b>\$ 7,437,775.78</b>

<b>GRAND TOTALS</b>	<b>\$ 4,355,243.19</b>	<b>\$ 19,148,602.44</b>
---------------------	------------------------	-------------------------





Service Contract Activity  
Summary  
July 1, 2005 -June 30, 2006

10	New Service Contracts		\$1,141,578.00
	Asset Management Contracts		
3	VMS, Inc.		\$790,548.00
20	ICA/DOT District Two Contract Value by Site		\$3,522,735.00
	ICA/DOT District Two Maintenance	\$211,987.00	
	ICA/DOT District Two Escrow *(draw)/deposit	(\$401,610.00)	
12	ICA/DOT District Three Contract Value by Site		\$3,152,109.00
	ICA/DOT District Three Escrow (draw)/deposit	\$96,825.00	
79	Service Contract Renewals		\$11,761,257
	Total Service Contracts June 30, 2006		\$20,368,228.00
12	Terminated Contracts	(\$475,007.00)	

**\*(draw)—funds extracted from escrow to subsidize performance of contract requirements**





New Service Contracts  
and Assignment to Employment Centers  
July 1, 2005 -June 30, 2006

**Department of Transportation**

District Four Headquarters, <i>Goodwill Industries S FL</i>	\$222,749.84
Total	<u>\$222,749.84</u>

**Florida Fish and Wildlife**

South Region Office JS, <i>Palm Beach Habilitation Center</i>	\$10,164.00
South Region Office GM, <i>Seagull Industries for the Disabled</i>	\$3,315.61
Total	<u>\$13,479.61</u>

**Miami-Dade County**

JC Animal Services, <i>Goodwill Industries S FL</i>	\$57,116.95
JC Annex, <i>Goodwill Industries S FL</i>	\$19,772.01
JC Building Permitting and Inspection, <i>Goodwill Industries S FL</i>	\$399,972.07
JC Data Processing, <i>Goodwill Industries S FL</i>	\$328,215.37
JC Radio Shop, <i>Goodwill Industries S FL</i>	\$47,452.82
Police Headquarters Gym, <i>Goodwill Industries S FL</i>	\$32,993.18
Total	<u>\$885,522.40</u>

**West Palm Beach**

Fourth District Court of Appeal GM, <i>Seagull Industries for the Disabled</i>	\$19,826.11
Total	<u>\$19,826.11</u>

Grand Total	<u><u>\$1,141,577.96</u></u>
-------------	------------------------------





\*\*\* INSERT Appendix A- Asset Management \*\*\*



	July 1, 2003 - June 30, 2004	July 1, 2004 - June 30, 2005	July 1, 2005 - June 30, 2006
--	---------------------------------	---------------------------------	---------------------------------

**Department of Transportation *Asset Management***

*VMS, Inc.*

Brevard North (Mims) Rest Area	\$295,000.08	\$295,000.00	\$309,937.20
Brevard South (Palm Bay) Rest Area	\$354,684.96	\$354,684.96	\$387,750.72
Flagler Weigh Station, I-95	\$101,357.88	\$101,357.88	\$92,860.20
<b>Total</b>	<b>\$751,042.92</b>	<b>\$751,042.84</b>	<b>\$790,548.12</b>

**Department of Transportation *Asset Management***

**DOT District 2**

*Infrastructure Corporation of America*

*minimum wage  
increase eff May 1,  
2005*

DOT Baker County Rest Area, I-10	\$298,336.56	\$298,336.56	\$305,672.88	\$314,426.28
DOT Baker County Scale Facility, SR 121	\$957.48	\$957.48	\$957.48	\$957.48
DOT Columbia County Scale Facility, US 441	\$2,553.24	\$2,553.24	\$2,553.24	\$2,553.24
DOT Columbia-Suwannee Rest Area, I-10	\$250,643.40	\$250,643.40	\$305,676.48	\$311,625.60
DOT Dixie County Scale Facility, US 19	\$10,212.72	\$10,212.72	\$10,212.72	\$10,212.72
DOT Duval County Rest Area, I-10	\$288,683.76	\$288,683.76	\$299,028.00	\$307,225.08
DOT Ellisville Rest Area, I-75	\$304,525.68	\$304,525.68	\$310,535.88	\$320,129.04
DOT Hamilton Welcome Center, I-75	\$291,272.40	\$291,272.40	\$394,495.44	\$403,920.72
DOT Madison County Rest Area, I-10	\$231,910.56	\$251,901.48	\$269,847.84	\$277,303.20
DOT Madison Weigh-in-Motion, I-10	\$125,773.56	\$129,193.32	\$137,122.68	\$137,911.44
DOT Nassau County Scale Facility, US 1	\$7,212.72	\$8,489.40	\$8,489.40	\$8,489.40
DOT Nassau County Scale Facility US 17	\$7,212.72	\$8,489.40	\$8,489.40	\$8,489.40
DOT Nassau Weigh-in-Motion, I-95	\$132,398.76	\$132,398.76	\$134,521.32	\$137,113.20
DOT Nassau Welcome Center, I-95	\$309,635.40	\$309,635.40	\$317,995.20	\$326,881.56



DOT Payne's Prairie Rest Area, I-75	\$349,265.64	\$349,265.64	\$349,265.64	\$349,265.64
DOT Putnam County Scale Facility, US 17	\$7,212.72	\$8,489.40	\$8,489.40	\$8,489.40
DOT St. Johns County South Rest Area, I-95	\$333,083.88	\$333,083.88	\$333,083.88	\$333,083.88
DOT Suwannee Scale Facility, US 27	\$3,829.80	\$3,829.80	\$3,829.80	\$3,829.80
DOT Taylor County Rest Area, US 19	\$94,973.76	\$104,211.84	\$111,113.28	\$114,206.16
DOT White Springs Weigh-in-Motion, I-75	\$128,738.76	\$128,738.76	\$144,667.08	\$146,622.24

Total Contract Value by Site	\$3,178,434	\$3,214,912	\$3,456,047	\$3,522,735
------------------------------	-------------	-------------	-------------	-------------

Maintenance	\$168,501	\$168,951	\$204,745	\$211,987
-------------	-----------	-----------	-----------	-----------

ICA/DOT District Two Escrow (draw)/deposit	(\$13,823)	(\$50,751)	(\$327,679)	(\$401,610)
--	------------	------------	-------------	-------------

Total	\$3,333,112	\$3,333,112	\$3,333,112	\$3,333,112
-------	-------------	-------------	-------------	-------------

10 Year Annual Amount Billed to ICA	\$3,333,112	\$3,333,112	\$3,333,112	\$3,333,112
-------------------------------------	-------------	-------------	-------------	-------------

**DOT District 3**

*Infrastructure Corporation of America*

*minimum wage increase eff May 1, 2005*

DOT Escambia Scale, US 90	\$38,918.52	\$38,918.52	\$39,043.20	\$39,245.76
DOT Escambia Weigh-in-Motion, I-10	\$145,573.08	\$145,573.08	\$146,009.16	\$147,738.00
DOT Escambia Welcome Center, I-10	\$329,825.52	\$329,825.52	\$339,159.72	\$347,832.12
DOT Gadsden County Rest Area, I-10	\$191,623.32	\$191,623.32	\$200,431.92	\$205,116.12
DOT Holmes County Rest Area, I-10	\$180,934.80	\$180,934.80	\$189,777.12	\$194,461.32
DOT Jackson County (Sneads) R A, I-10	\$309,284.28	\$309,284.28	\$330,573.12	\$340,902.12



DOT Jackson Weigh-in-Motion Station Office	\$147,278.04	\$147,278.04	\$150,338.28	\$151,271.88
DOT Jackson Welcome Center, US 231	\$220,867.44	\$220,867.44	\$230,793.36	\$235,825.80
DOT Jefferson County Rest Area, I-10	\$301,918.32	\$342,161.16	\$364,895.04	\$375,662.64
DOT Leon County Rest Area, I-10	\$306,163.32	\$306,163.32	\$325,806.24	\$344,946.12
DOT Okaloosa County Rest Area, I-10	\$277,128.24	\$334,759.80	\$375,885.96	\$384,553.56
DOT Santa Rosa County Rest Area, I-10	\$334,759.80	\$334,759.80	\$375,885.96	\$384,553.56
Total Contract Value by Site	\$2,784,275	\$2,882,149	\$3,068,599	\$3,152,109
ICA/DOT District Three Escrow (draw)/deposit	\$430,640	\$332,766	\$146,316	\$96,825
Total	\$3,214,915	\$3,214,915	\$3,214,915	\$3,248,934
10 Year Annual Amount Billed to ICA	\$3,214,914	\$3,214,914	\$3,214,914	\$3,248,933

Note: The format of this report has been changed to clarify the dollar allocation of cost for this contract.



Service Contracts Renewals  
July 1, 2005 - June 30, 2006

	July 1, 2004 - June 30, 2005	July 1, 2005 - June 30, 2006	% Change
<b>Cities</b>			
Boynton Beach, East Water Treatment Plant	\$15,429.11	\$17,438.46	13.02%
Pensacola City Hall	\$131,795.36	\$131,795.36	0.00%
Pensacola Regional Airport	\$385,325.61	\$417,741.78	8.41%
Tallahassee Star Metro	\$187,924.92	\$187,924.92	0.00%
Winter Park	\$29,982.60	\$37,523.64	25.15%
WPB Grassy Water Preserve	\$25,993.88	\$25,993.88	0.00%
WPB Parking Meter Coin Collection	\$67,227.50	\$68,070.02	1.25%
	<b>\$843,678.98</b>	<b>\$886,488.06</b>	<b>5.07%</b>

**County, Miami-Dade**

* Transit Authority Bus Cleaning	\$1,253,599.59	\$1,461,223.00	16.56%
Penske Bus Cleaning	\$128,400.00	\$128,400.00	0.00%
* JC Civic Plaza	\$61,173.79	\$111,237.32	81.84%
* JC Elections Headquarters	\$118,535.05	\$177,100.62	49.41%
* JC Flagler Building	\$242,015.76	\$368,284.74	52.17%
* JC Gerstein Building	\$651,851.63	\$742,096.91	13.84%
* JC Graham Building	\$177,478.61	\$255,690.01	44.07%
* JC Graham 36th Street	\$32,323.55	\$53,648.65	65.97%
* JC N Dade Justice Center Building	\$100,177.81	\$146,277.39	46.02%
* JC Public Defender Building	\$105,730.41	\$119,652.71	13.17%
* JC S Dade Govt Center	\$422,169.84	\$484,451.13	14.75%
* Police Headquarters Complex	\$617,323.92	\$730,388.15	18.32%
* Police Station #1	\$92,226.71	\$109,776.98	19.03%
* Police Station #6	\$92,226.71	\$109,776.98	19.03%
* Police Station #8	\$96,051.89	\$114,330.07	19.03%
* Police Training	\$203,468.17	\$207,435.83	1.95%
	<b>\$4,394,753.44</b>	<b>\$5,319,770.49</b>	<b>21.05%</b>

(\*Contracts subject to a 2% User Access Fee and 1/4% Auditor General Fee)

**County, Palm Beach**

County Owned Parcels	\$24,216.00	\$26,532.00	9.56%
Facilities Management GM	\$60,485.08	\$60,688.03	0.34%
Haverhill Park	\$30,635.32	\$31,935.22	
Mid-Western Community Center	\$20,527.54	\$20,527.80	0.00%
Radio Tower Sites	\$7,761.04	\$7,761.04	0.00%
Solid Waste Authority Admin Bldg	\$51,274.56	\$55,411.08	8.07%
Water Utilities GM	\$52,397.31	\$52,397.31	0.00%





West Jupiter Community Center GM	\$28,894.08	\$28,894.08	0.00%
	<u>\$276,190.93</u>	<u>\$284,146.56</u>	<u>2.88%</u>
<b>Counties, Misc.</b>			
Orange, Parks and Recreation Division	\$223,049.81	\$235,408.20	5.54%
Seminole County Parks and Recreation Division	\$38,768.64	\$46,545.49	20.06%
	<u>\$261,818.45</u>	<u>\$281,953.69</u>	<u>7.69%</u>
<b>Department of Agriculture and Consumer Services</b>			
Div of Administration Port Everglades Laboratory	\$10,746.12	\$10,746.12	0.00%
	<u>\$10,746.12</u>	<u>\$10,746.12</u>	<u>0.00%</u>
<b>Department of Environmental Protection</b>			
Bill Baggs Cape Florida Recreation Area	\$31,706.64	\$31,944.24	0.75%
Eden Gardens State Park	\$11,783.86	\$12,208.10	3.60%
Florida Caverns State Park	\$16,356.12	\$17,786.36	8.74%
Maclay Gardens State Park	\$21,425.00	\$20,897.91	-2.46%
Maclay Gardens, Bureau of Design	\$9,012.72	\$9,427.67	4.60%
St. Andrew State Park and Recreation Area	\$29,681.04	\$34,746.26	17.07%
St. George Island State Park (due to storm damage)	\$28,008.27	\$5,400.00	-80.72%
	<u>\$147,973.65</u>	<u>\$132,410.54</u>	<u>-10.52%</u>
<b>Department of Health</b>			
Escambia County Health Dept	\$200,637.99	\$216,571.80	7.94%
Gadsden County Health Dept	\$47,458.95	\$51,358.44	8.22%
Hillsborough County Health Dept	\$547,716.88	\$547,716.88	0.00%
	<u>\$795,813.82</u>	<u>\$815,647.12</u>	<u>2.49%</u>
<b>Department of Highway Safety &amp; Motor Vehicles</b>			
Melbourne Driver License Office GM	\$7,940.12	\$0.00	100.00%
Melbourne Driver License Office JS	\$4,282.33	\$0.00	100.00%
Miami Florida Highway Patrol Office	\$11,354.76	\$12,270.48	8.06%
Palm Bay Administrative Review Office	\$7,430.52	\$3,481.14	-53.15%
Port St Joe Driver License Office	\$2,493.17	\$2,612.16	4.77%
Quincy Driver License Office	\$7,997.24	\$8,362.32	4.57%
West Palm Beach Driver License Office	\$9,197.04	\$0.00	100.00%
	<u>\$50,695.18</u>	<u>\$26,726.10</u>	<u>-47.28%</u>





**Department of Juvenile Justice**

Dade Regional Juvenile Detention Center	\$153,865.92	\$0.00	100.00%
	<hr/>		
	\$153,865.92	\$0.00	100.00%

**Department of Management Services**

SunCom Directory Services	\$337,538.76	\$218,083.67	-35.39%
	<hr/>		
	\$337,538.76	\$218,083.67	-35.39%

**Department of State**

Division of Cultural Affairs	\$7,922.08	\$0.00	100.00%
	<hr/>		
	\$7,922.08	\$0.00	100.00%

**Department of Transportation**

Carrabelle Beach Wayside Park	\$45,669.96	\$0.00	100.00%
District 2 Office Complex, Credit Union & Materials Lab	\$154,030.02	\$156,925.41	1.88%
District 3 Chipley Administration Office Complex	\$152,316.56	\$165,429.79	8.61%
Gainesville Maintenance & Construction	\$24,686.52	\$19,548.65	-20.81%
Jacksonville Urban Office JS	\$87,400.59	\$0.00	-100.00%
Lake City Maintenance Yard Facilities	\$73,382.28	\$76,344.54	4.04%
Lake City Sign Shop	\$4,868.76	\$5,129.61	5.36%
Martin County Rest Area	\$335,535.31	\$353,933.00	5.48%
Midway Maintenance Office	\$51,373.07	\$55,291.32	7.63%
Milton Administration Offices	\$51,896.76	\$56,553.85	8.97%
Panama City Maintenance & Construction	\$19,480.77	\$21,860.88	12.22%
Polk County Rest Area, I-4	\$493,367.88	\$493,367.88	0.00%
St. Lucie County Rest Area, I-95	\$325,832.20	\$357,748.70	9.80%
US 1 Bunnell Weigh Station JS&GM	\$4,371.36	\$4,823.06	10.33%
WPB Operations, Forest Hill Blvd	\$23,119.23	\$24,201.98	4.68%
	<hr/>		
	\$1,847,331.27	\$1,791,158.67	-3.04%

**Department of Transportation *Litter Removal***

Escambia and Santa Rosa Counties Primary & Int	\$389,403.12	\$409,624.63	5.19%
Gadsden and Leon Counties Interstate	\$216,657.28	\$204,708.10	-5.52%
Gadsden and Leon Counties Primary Roads	\$41,115.81	\$43,250.92	5.19%
Gulf County Primary Roads	\$54,234.13	\$57,200.36	5.47%
Holmes and Washington Counties Primary Roads	\$153,746.04	\$161,729.99	5.19%
Holmes, Washington, Jackson Counties Interstate	\$196,674.96	\$206,888.98	5.19%
Jefferson County Interstate	\$60,579.83	\$63,725.71	5.19%
Jefferson County Primary Roads	\$103,603.20	\$108,983.26	5.19%





Okaloosa and Walton Counties Primary & Interstate	\$216,598.53	\$228,003.37	5.27%
	<u>\$1,432,612.90</u>	<u>\$1,484,115.32</u>	<u>3.59%</u>
<b>Fish and Wildlife Conservation Commission</b>			
Titusville Marine Patrol	\$3,479.20	\$6,098.92	75.30%
	<u>\$3,479.20</u>	<u>\$6,098.92</u>	<u>75.30%</u>
<b>Florida International University</b>			
Kovens Conference Center	\$110,181.61	\$0.00	
N Campus Wellness Center	\$11,825.66	\$0.00	
Physical Plant Safety and Receiving	\$11,375.20	\$0.00	
Professional Development Center	\$9,873.20	\$0.00	
Student Health Clinic	\$15,473.30	\$0.00	-100.00%
	<u>\$158,728.97</u>	<u>\$0.00</u>	<u>-100.00%</u>
<b>Tri-County Commuter Rail Authority</b>			
Administrative Offices	\$24,958.12	\$24,990.00	0.13%
Power Line Road	\$6,188.54	\$3,353.28	-45.81%
	<u>\$31,146.66</u>	<u>\$28,343.28</u>	<u>-9.00%</u>
<b>Southwest Florida Water Mgmt District</b>			
Brooksville Headquarters	\$206,290.96	\$189,028.92	-8.37%
	<u>\$206,290.96</u>	<u>\$189,028.92</u>	<u>-8.37%</u>
<b>St. Johns River Water Management District</b>			
District Headquarters	\$177,786.24	\$184,851.48	3.97%
Malabar Road Recreation Area	\$10,640.28	\$10,640.28	0.00%
Palm Bay Service Center JS	\$31,910.43	\$43,538.04	36.44%
Palm Bay Service Center GM	\$47,510.04	\$47,510.04	0.00%
	<u>\$267,846.99</u>	<u>\$286,539.84</u>	<u>6.98%</u>
<b>Total</b>	<u><u>\$11,228,434.28</u></u>	<u><u>\$11,761,257.30</u></u>	<u><u>4.75%</u></u>





**2004 - 2005 Figures Reported to DMS**

new		\$438,192.38
renewal		\$2,666,762.92
renewal with adjustments		\$7,994,657.44
	sub-total	\$11,099,612.74
City P-Cola City Hall not reported in error		\$131,795.36
adjustment made to Fl Caverns		(\$2,973.76)
	TOTAL	\$11,228,434.34



Miscellaneous Activity  
July 1, 2005 -June 30, 2006

**MICROFILMING: MacDonald Training Center**

City of Altamonte Springs	\$1,566.89
Hillsborough County	\$5,263.55
Valencia Community College	\$6,855.93
Total:	<hr/> \$13,686.37

**TERMINATED CONTRACTS**

**Department of Highway Safety**

Melbourne Driver License Office GM <i>Terminated December 31, 2005</i>	\$7,940.12
Melbourne Driver License Office JS <i>Terminated February 2006</i>	\$4,282.33
Palm Beach Driver License Office <i>Terminated July 1, 2005</i>	\$9,197.04

**Department of Juvenile Justice**

Dade Regional Detention Center <i>Terminated July 1, 2005</i>	\$153,865.92
--	--------------

**Department of State**

Cultural Affairs <i>Terminated July 1, 2005</i>	\$7,922.08
--	------------

**Department of Transportation**

Carrabelle Beach Wayside Park <i>Terminated October 27, 2005</i>	\$45,669.96
Jacksonville Urban Office <i>Terminated July 1, 2005</i>	\$87,400.59

**Florida International University**

Kovens Conference Center	\$110,181.61
N Campus Wellness Center	\$11,825.66
Physical Plant Safety and Receiving	\$11,375.20
Professional Development Center	\$9,873.20
Student Health Clinic	\$15,473.30
<i>Terminated July 1, 2005</i>	<hr/>
Total	







**Contract Activity by Service Provider**  
**July 1, 2005 -September 30, 2006**

<b>Service Provider</b> <i>figures reflects new contracts, renewals and adjustments</i>	<b>July 1, 2004 - June 30, 2005</b>	<b>July 1, 2005 - June 30, 2006</b>	<b>% Change</b>
<b>ACT Corporation</b>			
DOT US 1 Bunnell Weigh Station	\$4,371.36	\$4,823.06	
DOT/ICA Payne's Prairie Rest Area	\$349,265.64	\$349,265.64	
DOT/ICA St Johns County South Rest Area	\$333,083.88	\$333,083.88	
DOT/VMS Brevard North (Mims) Rest Area	\$295,000.00	\$309,937.20	
DOT/VMS Brevard South (Palm Bay) Rest Area	\$354,684.96	\$387,750.72	
SJRWMD District Headquarters	\$177,786.24	\$184,851.48	
SJRWMD Palm Bay Service Center JS	\$0.00	\$43,538.04	
VMS/DOT Flagler Weigh Station, I-95	\$101,357.88	\$92,860.20	
<b>Total</b>	<b>\$1,615,549.96</b>	<b>\$1,706,110.22</b>	<b>5.61%</b>
<b>Alachua County ARC</b>			
DOT Gainesville Maint Construction Office	\$24,686.52	\$19,548.65	
<b>Total</b>	<b>\$24,686.52</b>	<b>\$19,548.65</b>	<b>-20.81%</b>
<b>ARC Brevard</b>			
DHSMV Melbourne Driver License Office GM	\$7,940.12	\$0.00	
DHSMV Palm Bay Admin Review Office	\$7,430.52	\$3,481.14	
Fish & Wildlife Titusville Marine Patrol	\$3,479.20	\$6,098.92	
SJRWMD Malabar Road Recreation Area	\$10,640.28	\$10,640.28	
SJRWMD Palm Bay Service Center GM	\$47,510.04	\$47,510.04	
SJRWMD Palm Bay Service Center JS	\$31,910.43	\$0.00	
<b>Total</b>	<b>\$108,910.59</b>	<b>\$67,730.38</b>	<b>-37.81%</b>
<b>ARC Jacksonville</b>			
DOT Jacksonville Urban Office	\$87,400.59	\$0.00	
<b>Total</b>	<b>\$87,400.59</b>	<b>\$0.00</b>	<b>-100.00%</b>
<b>ARC Nature Coast</b>			
SWFWMD Brooksville Headquarters	\$206,290.96	\$189,028.92	
<b>Total</b>	<b>\$206,290.96</b>	<b>\$189,028.92</b>	<b>-8.37%</b>
<b>Archways</b>			
DOA Div of Admin, Port Everglades Facility	\$10,746.12	\$10,746.12	
<b>Total</b>	<b>\$10,746.12</b>	<b>\$10,746.12</b>	<b>0.00%</b>





**AXON Technologies**

SunCom Directory Services \$337,538.76 \$218,083.67

**Total** \$337,538.76 \$218,083.67 -35.39%

**CARC**

DOT Dist 2 Office, Credit Union & Mat Lab \$154,030.02 \$156,925.41  
 DOT Lake City Maintenance Yard Facilities \$73,382.28 \$76,344.54  
 DOT Lake City Sign Shop \$4,868.76 \$5,129.61  
 DOT/ICA Baker County Rest Area \$298,336.56 \$314,426.28  
 DOT/ICA Baker County Scale Facility \$957.48 \$957.48  
 DOT/ICA Duval County Rest Area \$288,683.76 \$307,225.08  
 DOT/ICA Ellisville Rest Area \$304,525.68 \$320,129.04

**Total** \$1,124,784.54 \$1,181,137.44 5.01%

**Comprehensive Community Services**

DOT/ICA Columbia-Suwannee Rest Area \$250,643.40 \$311,625.60  
 DOT/ICA Hamilton Welcome Center \$291,272.40 \$403,920.72  
 DOT/ICA White Springs WIM \$128,738.76 \$146,622.24

**Total** \$670,654.56 \$862,168.56 28.56%

**Escambia ARC**

DOT Escambia & Santa Rosa Counties Litter \$171,337.37 \$243,432.00  
 DOT/ICA Escambia Scale US 90 \$38,918.52 \$44,615.76  
 DOT/ICA Escambia Weigh-in-Motion \$145,573.08 \$147,738.00  
 DOT/ICA Escambia Welcome Center \$329,825.52 \$347,832.12

**Total** \$685,654.49 \$783,617.88 14.29%

**Easter Seal Florida**

DHSMV Melbourne Driver License Office \$4,282.23 \$0.00

**Total** \$4,282.23 \$0.00 -100.00%

**Gadsden ARC**

City of Tallahassee, TalTran \$187,924.92 \$187,924.92  
 DEP Maclay Gardens Bureau of Design \$9,012.72 \$9,427.67  
 DEP Maclay Gardens State Park \$21,425.00 \$20,897.91  
 DEP St George Island State Park \$28,008.27 \$5,400.00  
 DHSMV Quincy Driver License Office \$7,997.24 \$8,362.32  
 DOH Gadsden County Health Dept \$47,458.95 \$51,358.44  
 DOS Division of Cultural Affairs \$7,922.08 \$0.00  
 DOT Carrabelle Beach Wayside Park \$45,669.96 \$0.00  
 DOT Gadsden & Leon Counties Interstate Litter \$216,657.28 \$204,708.10  
 DOT Gadsden & Leon Counties Primary Roads Litter \$41,115.81 \$43,250.92  
 DOT Midway Maintenance Office \$51,373.07 \$55,291.32  
 DOT/ICA Leon County Rest Area \$306,163.32 \$344,946.12

**Total** \$970,728.62 \$931,567.72 -4.03%





**Glades Area ARC**

PBC Facilities Management	\$36,354.15	\$36,354.15	
PBC Tower Sites	\$1,732.48	\$1,732.48	
<b>Total</b>	<b>\$38,086.63</b>	<b>\$38,086.63</b>	<b>0.00%</b>

**Goodwill Broward** (merged w Goodwill South FL)

Tri-County Commuter Rail Authority Admin	\$24,958.12	\$24,990.00	
Tri-County Commuter Rail Authority Powerline	\$6,188.54	\$3,353.28	
<b>Total</b>	<b>\$31,146.66</b>	<b>\$28,343.28</b>	<b>-9.00%</b>

**Goodwill South Florida**

140 Flagler Building	\$252,579.99	\$368,284.74	
DJJ Dade Regional Juvenile Detention Center	\$153,865.92	\$0.00	
DOT Construction-Ft Lauderdale	\$0.00	\$222,749.84	
FIU Kovens Conference Center	\$110,181.61	\$0.00	
FIU N Campus Wellness Center	\$11,825.66	\$0.00	
FIU Physical Plant Safety & Receiving	\$11,375.20	\$0.00	
FIU Professional Development Center	\$9,873.20	\$0.00	
FIU Student Health Clinic	\$15,473.30	\$0.00	
MD JC Animal Services	\$0.00	\$57,116.95	
MD JC Annex	\$0.00	\$19,772.01	
MD JC Building Permitting and Inspection	\$0.00	\$399,972.07	
MD JC Civic Plaza	\$64,516.38	\$111,237.32	
MD JC Data Processing	\$0.00	\$328,215.37	
MD JC Elections Headquarters	\$122,375.27	\$177,100.62	
MD JC Gerstein Building	\$675,634.60	\$742,096.91	
MD JC Graham Building	\$184,673.67	\$255,690.01	
MD JC Graham Building - 36th Street	\$35,138.28	\$53,648.65	
MD JC N Dade Justice Center	\$103,901.85	\$146,277.39	
MD JC Public Defender Building	\$109,672.45	\$119,652.71	
MD JC Radio Shop	\$0.00	\$47,452.82	
MD JC South Dade Government Center	\$436,221.34	\$484,451.13	
MD Police Headquarters Complex	\$700,928.77	\$730,388.15	
MD Police Station #1	\$105,307.90	\$109,776.98	
MD Police Station #6	\$105,307.90	\$109,776.98	
MD Police Station #8	\$109,675.64	\$114,330.07	
MD Police Hqtrs GYM	\$0.00	\$32,993.18	
MD Police Training	\$203,468.16	\$207,435.83	
MD Transit Authority Bus Cleaning	\$1,253,599.59	\$1,461,223.00	
PENSKE Bus	\$128,400.00	\$128,400.00	
<b>Total</b>	<b>\$4,903,996.68</b>	<b>\$6,428,042.73</b>	<b>31.08%</b>

**Gulf County ARC**

DHSMV Port St Joe Driver License Office	\$2,493.17	\$2,612.16	
DOT Gulf County Litter	\$54,234.13	\$57,200.36	
<b>Total</b>	<b>\$56,727.30</b>	<b>\$59,812.52</b>	<b>5.44%</b>





**Gulfstream Goodwill**

Martin County Rest Area, I-95	\$335,535.31	\$353,933.00
St. Lucie County Rest Area, I-95	\$325,832.20	\$357,748.70

<b>Total</b>	<b>\$661,367.51</b>	<b>\$711,681.70</b>	<b>7.61%</b>
--------------	---------------------	---------------------	--------------

**Hope Center**

DHSMV Miami Florida Highway Patrol Office	\$11,354.76	\$12,270.48
Miami-Dade Corrections and Rehabilitation (Terminated)		

<b>Total</b>	<b>\$11,354.76</b>	<b>\$12,270.48</b>	<b>8.06%</b>
--------------	--------------------	--------------------	--------------

**Horizons of Okaloosa County**

DEP Eden Gardens State Park	\$11,783.86	\$12,208.10
DOT Okaloosa & Walton Counties Litter	\$124,001.53	\$130,794.85

<b>Total</b>	<b>\$135,785.39</b>	<b>\$143,002.95</b>	<b>5.32%</b>
--------------	---------------------	---------------------	--------------

**Jackson County ARC**

DEP Florida Caverns State Park	\$16,356.12	\$17,786.36
DOT Holmes, Washington and Jackson Counties Litter	\$164,792.51	\$173,518.01
DOT/ICA Jackson Weigh-in-Motion	\$147,278.04	\$151,271.88

<b>Total</b>	<b>\$328,426.67</b>	<b>\$342,576.25</b>	<b>4.31%</b>
--------------	---------------------	---------------------	--------------

**Lakeview Center**

City of Pensacola Airport	\$385,325.61	\$417,741.78
City of Pensacola City Hall	\$131,795.36	\$131,795.36
DOH Escambia County Health Department	\$200,637.99	\$216,571.80
DOH Hillsborough County Health Dept	\$547,716.88	\$547,716.88
DOT Milton Administration Offices	\$51,896.76	\$56,553.85

<b>Total</b>	<b>\$1,317,372.60</b>	<b>\$1,370,379.67</b>	<b>4.02%</b>
--------------	-----------------------	-----------------------	--------------

**MACtown**

DEP Bill Baggs Cape Florida Recreation Area	\$31,706.64	\$31,944.24
---	-------------	-------------

<b>Total</b>	<b>\$31,706.64</b>	<b>\$31,944.24</b>	<b>0.75%</b>
--------------	--------------------	--------------------	--------------

**Madison-Jefferson ARC**

DOT Jefferson County Interstate Litter	\$60,579.83	\$63,725.71
DOT Jefferson County Primary Roads Litter	\$103,603.20	\$108,983.26
DOT/ICA Jefferson County Rest Area	\$342,161.16	\$375,662.64
DOT/ICA Madison County Rest Area	\$251,901.48	\$277,303.20
DOT/ICA Madison County WIM	\$129,193.32	\$137,911.44
DOT/ICA Taylor County Rest Area	\$104,211.84	\$114,206.16

<b>Total</b>	<b>\$991,650.83</b>	<b>\$1,077,792.41</b>	<b>8.69%</b>
--------------	---------------------	-----------------------	--------------





**Nassau ARC**

DOT/ICA Nassau Weigh-in-Motion	\$132,398.76	\$137,113.20
DOT/ICA Nassau Welcome Center	\$309,635.40	\$326,881.56

<b>Total</b>	<b>\$442,034.16</b>	<b>\$463,994.76</b>	<b>4.97%</b>
--------------	---------------------	---------------------	--------------

**Palm Beach Habilitation Center**

City of Boynton Beach E Water Treatment Plant	\$15,429.11	\$17,438.46
City of WPB Parking Meter Coin Collection	\$67,227.50	\$68,070.02
FFWCC South Region Office JS	\$0.00	\$10,164.00
DOT WPB Operations - Forest Hill Blvd	\$23,119.23	\$24,201.98
WPB Grassy Water Preserve	\$25,993.88	\$25,993.88

<b>Total</b>	<b>\$131,769.72</b>	<b>\$145,868.34</b>	<b>10.70%</b>
--------------	---------------------	---------------------	---------------

**Polk AHC**

DOT Polk County Rest Area, I-4	\$493,367.88	\$493,367.88
--------------------------------	--------------	--------------

<b>Total</b>	<b>\$493,367.88</b>	<b>\$493,367.88</b>	<b>0.00%</b>
--------------	---------------------	---------------------	--------------

**Quest**

City of Winter Park	\$29,982.60	\$37,523.64
Orange Count Parks and Recreation	\$223,049.81	\$235,408.20
Seminole County Parks and Recreation	\$38,768.64	\$46,545.49

<b>Total</b>	<b>\$291,801.05</b>	<b>\$319,477.33</b>	<b>9.48%</b>
--------------	---------------------	---------------------	--------------

**Santa Rosa, ARC**

DOT Escambia and Santa Rosa Counties Litter	\$218,065.75	\$166,192.63
DOT Milton Administration Offices	\$7,531.16	\$0.00
ICA/DOT Okaloosa County Rest Area	\$334,759.80	\$384,553.56
ICA/DOT Santa Rosa County Rest Area	\$334,759.80	\$384,553.56

<b>Total</b>	<b>\$895,116.51</b>	<b>\$935,299.75</b>	<b>4.49%</b>
--------------	---------------------	---------------------	--------------

**Seagull Industries**

FWCC South Region Office GM	\$0.00	\$3,315.61
PBC County owned parcels	\$24,216.00	\$26,532.00
PBC Facilities Management	\$24,130.93	\$24,333.88
PBC Haverhill Park	\$30,635.32	\$31,935.22
PBC Mid-Western Community Center	\$20,527.54	\$20,527.54
PBC Solid Waste Authority Admin Bldg	\$51,274.56	\$55,411.08
PBC Tower Sites	\$6,028.56	\$6,028.56
PBC Water Utilities	\$52,397.31	\$52,397.31
PBC West Jupiter Community Center	\$28,894.08	\$28,894.08
WPB Driver License Office	\$9,197.04	\$0.00
WPB Fourth District Court of Appeal	\$0.00	\$19,826.11

<b>Total</b>	<b>\$247,301.34</b>	<b>\$269,201.39</b>	<b>8.86%</b>
--------------	---------------------	---------------------	--------------







**St Andrew Bay Center**

DEP St Andrew State Park and Rec. Area	\$29,681.04	\$34,746.26	
DOT Panama City Maintenance & Construction	\$19,480.77	\$21,860.88	
<b>Total</b>	<b>\$49,161.81</b>	<b>\$56,607.14</b>	<b>15.14%</b>

**Walton County ARC**

DOT Okaloosa and Walton Counties Litter	\$92,597.04	\$97,208.52	
<b>Total</b>	<b>\$92,597.04</b>	<b>\$97,208.52</b>	<b>4.98%</b>

**Washington-Holmes ARC**

DOT Chipley Administration Office Complex	\$152,316.60	\$165,429.79	
DOT Holmes and Washington Counties Litter	\$153,746.04	\$161,729.99	
DOT Holmes Washington and Jackson Counties Litter	\$31,882.45	\$33,370.18	
DOT/ICA Gadsden County Rest Area	\$191,623.32	\$205,116.12	
DOT/ICA Holmes County Rest Area	\$180,934.80	\$194,461.32	
DOT/ICA Jackson County (Sneads) Rest Area	\$309,284.28	\$340,902.12	
DOT/ICA Jackson County Welcome Center	\$220,867.44	\$235,825.80	
<b>Total</b>	<b>\$1,240,654.93</b>	<b>\$1,336,835.32</b>	<b>7.75%</b>

**Arlenes Cleaning Service**

DOT/ICA Columbia County Scale Facility	\$2,553.24	\$2,553.24	
DOT/ICA Dixie County Scale Facility	\$10,212.72	\$10,212.72	
DOT/ICA Suwannee Scale Facility	\$3,829.80	\$3,829.80	
<b>Total</b>	<b>\$16,595.76</b>	<b>\$16,595.76</b>	<b>0.00%</b>

**Sassy's Cleaning Service**

DOT/ICA Nassau County Scale Facility, US 1	\$8,489.40	\$8,489.40	
DOT/ICA Nassau County Scale Facility, US 17	\$8,489.40	\$8,489.40	
DOT/ICA Putman County Scale Facility, US 17	\$8,489.40	\$8,489.40	
<b>Total</b>	<b>\$25,468.20</b>	<b>\$25,468.20</b>	<b>0.00%</b>





## Certified Employment Centers

### **Abilities, Inc. of Florida**

Guy Klenke, Senior Vice President  
2735 Whitney Rd.  
Clearwater, FL 33760  
321-639-7068(wk & cell)—FAX 639-8272  
(727) 538-7370—FAX (727) 538-7387  
[gklenke@ourpeoplework.org](mailto:gklenke@ourpeoplework.org)  
[www.ourpeoplework.org](http://www.ourpeoplework.org)

### **ACT Corporation**

Wayne Dreggors, Executive Director  
1221 Willis Avenue  
Daytona Beach, FL 32114  
(386) 947-3600—FAX (386) 274-3478  
[wayneceo@actcorp.org](mailto:wayneceo@actcorp.org)  
[www.actcorp.org](http://www.actcorp.org)

### **ARC of Alachua County, Inc.**

Dick Bradley, Executive Director, ext. 221  
3303 NW 83<sup>rd</sup> Street  
Gainesville, FL 32606  
(352) 334-4060—FAX (352) 334-4059  
[dbradley@arcalachua.org](mailto:dbradley@arcalachua.org)  
[www.arcalachua.org](http://www.arcalachua.org)

### **ARC-Brevard, Inc.**

David Cooke, President & CEO  
1694 Cedar Street  
Rockledge, FL 32955  
(321) 690-3464—FAX (321) 690-3467  
[ceo4arc@arc-brevard.org](mailto:ceo4arc@arc-brevard.org)  
[www.arc-brevard.org](http://www.arc-brevard.org)

### **ARC Gateway**

Donna Fassett, Executive Director  
3932 N. 10<sup>th</sup> Avenue  
Pensacola, FL 32503  
(850) 434-2638—FAX (850) 438-2180  
[arcesc@aol.com](mailto:arcesc@aol.com)  
[www.arc-escambia.org](http://www.arc-escambia.org)

### **Abilities Resource Center of Indian River County-**

R.D. (Roger) Baker, EdD Executive Director, ext 235  
1375 16th Avenue  
Vero Beach, FL 32960  
(772) 562-6854—FAX (772) 562-6063  
[drbaker@arcir.org](mailto:drbaker@arcir.org)  
[www.thearclink.org](http://www.thearclink.org)

### **Arc Jacksonville, The**

Jim Whittaker, Executive Director, ext. 14  
1050 N. Davis Street  
Jacksonville, FL 32209  
(904) 355-0155—FAX (904) 355-9616  
[thearc\\_jwhittaker@gbso.net](mailto:thearc_jwhittaker@gbso.net)  
[www.arcjacksonville.org](http://www.arcjacksonville.org)

### **ARC/Madison-Jefferson, Inc.**

Tim Ressler, Executive Director  
P.O. Box 912  
Madison, FL 32340  
(850) 973-4614—FAX (850) 973-4334  
[t.ressler@earthlink.com](mailto:t.ressler@earthlink.com)

### **ARC/Nassau County, Inc.-**

John Campbell, Executive Director  
86051 Hamilton Street  
Yulee, FL 32097  
(904) 225-9355—FAX (904) 225-9262  
[arcnass@bellsouth.net](mailto:arcnass@bellsouth.net)

### **Arc Nature Coast, Inc., The**

Mark W. Barry, Executive Director  
5283 Neff Lake Road  
Brooksville, FL 34601  
(352) 544-2322—FAX (352) 544-2325  
[mbarry@thearc-naturecoast.org](mailto:mbarry@thearc-naturecoast.org)  
[www.thearc-naturecoast.org](http://www.thearc-naturecoast.org)

### **ARC Santa Rosa, Inc., The**

Ann Smith, President & CEO  
6225 Dixie Road  
Milton, FL 32570  
(850) 623-9320—FAX (850) 623-2877  
[director@ArcSantaRosa.org](mailto:director@ArcSantaRosa.org)  
[www.ArcSantaRosa.org](http://www.ArcSantaRosa.org)

### **ARC of South Florida, Inc.- (INACTIVE)**

Mike Messer, Executive Director, ext 102  
5555 Biscayne Boulevard  
Miami, FL 33137  
(305) 759-8500—FAX (305) 754-9223  
[arcsofla@aol.com](mailto:arcsofla@aol.com)





## Certified Employment Centers

### **ARC of Washington-Holmes Counties, Inc.**

Mavis Smith, Executive Director  
1335 South Boulevard  
Chipley, FL 32428  
(850) 638-7517—FAX (850) 638-2977  
[arcwh@digitalexp.com](mailto:arcwh@digitalexp.com)

### **Archways, Inc. (Creative Colors)**

Andrea Katz, Executive Director  
919 NE 13<sup>th</sup> Street  
Ft. Lauderdale, FL 33304  
(954) 763-2030—FAX (954) 467-6615  
[ell555@aol.com](mailto:ell555@aol.com)

### **AXON Technologies, Inc.**

Steve Jensen, President, ext. 210  
6041 Siesta Lane  
Port Richey, FL 34668  
(727) 847-5572—FAX (727) 847-6681  
Toll-free (800) 251-8828  
[sjensen@optimatechnologies.com](mailto:sjensen@optimatechnologies.com)  
[www.optimatechnologies.com](http://www.optimatechnologies.com)

### **Brevard Achievement Center**

Dayle Olson, President & CEO  
1845 Cogswell Street  
Rockledge, FL 32955  
(321) 632-8610—FAX (321) 631-8207  
[dolson@bacbrevard.com](mailto:dolson@bacbrevard.com)  
[www.bacbrevard.com](http://www.bacbrevard.com)

### **CARC-Advocates for Citizens with Disabilities, Inc.**

Carol Jewett, Executive Director  
512 SW Sisters Welcome Road  
Lake City, FL 32025-0752  
(386) 752-1880—FAX 758-2031/Cell 961-5834  
[cjewett@lakecity-carc.com](mailto:cjewett@lakecity-carc.com)  
[www.lakecity-carc.com](http://www.lakecity-carc.com)

### **Community Supports, Inc.**

Frank Lanzi, Executive Director  
1091 W. Morse Blvd  
Winter Park, FL 32789  
(407) 645-3211—FAX (407) 645-5890  
[terry@d-s-i.com](mailto:terry@d-s-i.com)

### **Comprehensive Community Services**

Bobbie Lake, Executive Director  
P.O. Drawer L  
Live Oak, FL 32060  
(386) 362-7143—FAX (386) 362-7058  
[bobbie\\_lake@yahoo.com](mailto:bobbie_lake@yahoo.com)

### **Gadsden Association Rehabilitation Center, Inc.**

Martha Coley, Executive Director  
1633-A Highbridge Rd.  
Quincy, FL 32351  
(850) 627-9058—FAX (850) 627-1065  
[garc@tds.net](mailto:garc@tds.net)

### **Glades Area ARC, Inc.**

F. Scot Kannell, Executive Director  
4250 NW 16<sup>th</sup> Street  
Belle Glade, FL 33430  
(561) 996-9583—FAX (561) 996-8692  
[arcglades@yahoo.com](mailto:arcglades@yahoo.com); [kannell@prodigy.net](mailto:kannell@prodigy.net)

### **Goodwill Industries of Central Florida, Inc.**

Richard Coleman, President & CEO  
7531 S. Orange Blossom Trail  
Orlando, FL 32809  
(407) 857-0659—FAX (407) 851-8190  
[admin@goodwillcfl.org](mailto:admin@goodwillcfl.org)/[rcoleman@atlantic.net](mailto:rcoleman@atlantic.net)  
[www.goodwillcfl.org](http://www.goodwillcfl.org)

### **Goodwill Industries of South Florida, Inc.**

Dennis Pastrana, President & CEO  
2121 NW 21<sup>st</sup> Street  
Miami, FL 33142  
(305) 325-9114—FAX (305) 326-4105  
[info@goodwillmiami.org](mailto:info@goodwillmiami.org)

### **Goodwill Industries of Southwest Florida, Inc.-**

Thomas L. Feurig, CEO, ext. 223  
4940 Bayline Drive  
N. Ft. Myers, FL 33917  
(239) 995-2106—FAX (239) 995-5868  
[tomFeurig@goodwillswfl.org](mailto:tomFeurig@goodwillswfl.org)  
[www.goodwillswfl.org](http://www.goodwillswfl.org)

### **Gulf County ARC**

Dianna Harrison, Program Administrator  
309 Williams Avenue  
Port St. Joe, FL 32456  
(850) 229-6327—FAX (850) 227-2084  
[gcarc@gtcom.net](mailto:gcarc@gtcom.net)

### **Gulfstream Goodwill Industries, Inc.**

Marvin Tanck, President & CEO  
1715 Tiffany Drive E.  
West Palm Beach, FL 33407  
(561) 848-7200—FAX (561) 848-0346  
[tanck@gulfstreamgoodwill.com](mailto:tanck@gulfstreamgoodwill.com)  
[www.gulfstreamgoodwill.com](http://www.gulfstreamgoodwill.com)  
[www.abletrust.org/goodwill/goodwill.html](http://www.abletrust.org/goodwill/goodwill.html)





## Certified Employment Centers

### **Hope Center, Inc.**

Nadine Johnson, Executive Director, ext. 207  
P.O. Box 10789  
Miami, FL 33101-0789  
(305) 545-7572—FAX (305) 325-0382  
[njohnson@hopecenterhc.org](mailto:njohnson@hopecenterhc.org)/[nadinejohn@aol.com](mailto:nadinejohn@aol.com)  
[www.hopecenterhc.org](http://www.hopecenterhc.org)

### **Horizons of Okaloosa County, Inc.**

Dr. David O. Miller, President & CEO  
123 Truxton Ave.  
Ft. Walton Beach, FL 32547  
(850) 863-1530—FAX (850) 862-4589  
[domiller@horizonsfwb.com](mailto:domiller@horizonsfwb.com)  
[www.horizons.nu](http://www.horizons.nu)

### **Jackson County ARC**

Frances Henderson, Executive Director  
2973 Pennsylvania Avenue, Suite A  
Marianna, FL 32448  
(850) 526-7333—FAX (850) 526-2311  
[jcarc@digitalexp.com](mailto:jcarc@digitalexp.com)

### **Jeff Industries, Inc.**

Claudia Roberts, Executive Director  
115 East Coast Avenue  
Hypoluxo, FL 33462  
(561) 547-9258—FAX (561) 547-9682  
[HelpJeffAdm@msn.com](mailto:HelpJeffAdm@msn.com)

### **Key Training Center/CCARC (INACTIVE)**

Chester V. Cole, Executive Director  
130 Heights Avenue  
Inverness, Florida 34452  
(352) 341-4633-FAX (352) 341-4656  
[keytraining@citrust.infi.net](mailto:keytraining@citrust.infi.net)  
[www.keytraining.org](http://www.keytraining.org)

### **Lakeview Center, Inc.**

Gary Bemby, President & CEO  
2001 N. 'E' Street  
Pensacola, FL 32501  
(850) 432-1222—FAX (850) 595-1400  
[lakeview@bhcpns.org](mailto:lakeview@bhcpns.org)  
[www.bhcpns.org](http://www.bhcpns.org)

### **MacDonald Training Center, Inc.**

Jim Freyvogel, President & CEO  
5420 W. Cypress Drive  
Tampa, FL 33607  
(813) 870-1300—FAX (813) 872-6010  
[jfreyvogel@macdonaldcenter.org](mailto:jfreyvogel@macdonaldcenter.org)  
[www.macdonaldcenter.org](http://www.macdonaldcenter.org)

### **James Ranch**

Bill Brinson, Director  
2902 Cork Road  
Plant City, FL 33565  
(813) 752-6508—FAX (813) 752-8851  
[JROrders@macdonaldcenter.org](mailto:JROrders@macdonaldcenter.org)

### **MACtown, Inc.**

Ray Nagel, Executive Director  
151 NE 62<sup>nd</sup> Street  
Miami, FL 33138  
(305) 758-4485—FAX (305) 756-9990  
[director@mactown.org](mailto:director@mactown.org)  
[www.mactown.org](http://www.mactown.org)

### **MyWorkCenter.com**

Jeffrey S. Minder  
5607 Wagon Wheel Circle  
Tallahassee, FL 32317  
(850) 321-3253  
[jminder@myworkcenter.com](mailto:jminder@myworkcenter.com)  
[www.myworkcenter.com](http://www.myworkcenter.com)

### **Palm Beach Habilitation Center, Inc.**

Tina Philips, President & CEO  
4522 S. Congress Avenue  
Lake Worth, FL 33461  
(561) 965-8500—FAX (561) 357-9552  
[tina@pbhab.com](mailto:tina@pbhab.com)  
[www.pbhab.com](http://www.pbhab.com)

### **Pinellas Association for Retarded Citizens, Inc (PARC, Inc.)**

Sue Buchholtz, President/CEO  
3190 Tyrone Blvd  
St. Petersburg, FL 33710  
(727) 345-9111 – FAX (727) 345-7130  
[www.parc-fl.org](http://www.parc-fl.org)





## Certified Employment Centers

### **Pine Castle, Inc.**

Jonathan W. May, Executive Director  
4911 Spring Park Road  
Jacksonville, FL 32207  
(904) 733-2650—FAX (904) 733-2681  
[jmay@pinecastle.org](mailto:jmay@pinecastle.org)  
[www.pinecastle.org](http://www.pinecastle.org)

### **Walton County ARC, Inc.**

Kermit Wright, Executive Director  
P.O. Box 813  
DeFuniak Springs, FL 32435  
(850) 892-5013—FAX (850) 892-7895  
[wcarc@dfsi.net/wcarc](mailto:wcarc@dfsi.net/wcarc)  
[www.dfsi.net/wcarc](http://www.dfsi.net/wcarc)

### **Polk County AHC, Inc.**

Shirley Balogh, President & CEO  
1038 Sunshine Drive E.  
Lakeland, FL 33801  
(863) 665-3846—FAX (863) 665-2330  
[sbalogh@pcahc.org](mailto:sbalogh@pcahc.org)  
[www.pcahc.org](http://www.pcahc.org)

### **Quest, Inc.**

Katie Porta, President & CEO  
P.O. Box 1300  
Apopka, FL 32704  
(407) 889-4530—FAX (407) 889-5710  
[kporta@questinc.org](mailto:kporta@questinc.org)  
[www.questinc.org](http://www.questinc.org)

### **St. Andrew Bay Center, Inc.**

Jan Pearce, Executive Director  
P.O. Box 1320  
Lynn Haven, FL 32444  
(850) 265-2951—FAX (850) 265-9732  
[sabc@knology.net](mailto:sabc@knology.net)

### **Seagull Industries for the Disabled, Inc.**

Alfred Eisinger, Executive Director, ext. 131  
3879 Byron Drive  
Riviera Beach, FL 33404  
(561) 842-5814—FAX (561) 881-3554  
[main@seagull.org](mailto:main@seagull.org)  
[www.seagull.org](http://www.seagull.org)

### **UCP of East Central Florida (WORC)**

Barry Pollack, President & CEO, ext. 17  
1100 Jimmy Ann Drive  
Daytona Beach, FL 32117  
(386) 274-6474—FAX (386) 274-6532  
[bpollack@ucpecf.org](mailto:bpollack@ucpecf.org)  
[www.ucpecf.org](http://www.ucpecf.org)

